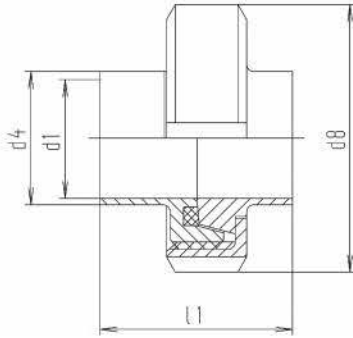


2.2 Piping connections

2.2.1 Unions

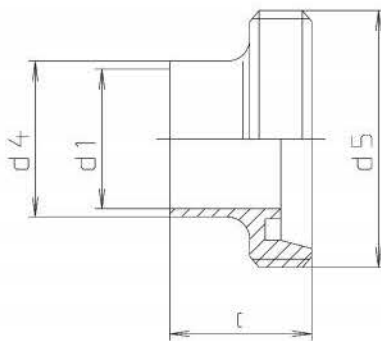
	page
Reducing male DIN 11851, welding type	2.2.1-25
Reducing liner DIN 11851, welding type (224A).....	2.2.1-27
R-male, thread inside (according to DIN 11851) (228).....	2.2.1-27
R-liner, thread inside (according to DIN 11851) (227).....	2.2.1-27
R-male, thread outside (according to DIN 11851) (229).....	2.2.1-27
R-liner, thread outside (according to DIN 11851) (230).....	2.2.1-29
Male hose spout, DIN 11851	2.2.1-29
Liner with hose nozzle, DIN (232)	2.2.1-29
Hose nozzle, weld end, DIN (238)	2.2.1-29
Male hose spout, DIN 11851, brewery type	2.2.1-31
Liner with hose nozzle, brewery type (236).....	2.2.1-31
Hose nozzle, weld end, brewery type (238A).....	2.2.1-31
Male hose spout, DIN 11851, light version	2.2.1-31
Liner with hose nozzle, tube type (235).....	2.2.1-33
Hose nozzle, weld end, DIN, light version (239)	2.2.1-33
Hose nozzle, weld end, inch OD, light version (239Z).....	2.2.1-33
Hose clip (239S)	2.2.1-33
Welding male, SMS (275)	2.2.1-35
Welding liner, SMS (276).....	2.2.1-35
Nut, SMS (272).....	2.2.1-35
Gasket, SMS (273).....	2.2.1-35
Welding male, SMS (275)	2.2.1-37
Welding liner, SMS (276).....	2.2.1-37
Welding male, IDF (according to ISO 2853) (280A).....	2.2.1-37
Welding liner, IDF (according to ISO 2853) (281A).....	2.2.1-37
Nut, IDF (according to ISO 2853) (282)	2.2.1-39
Gasket, IDF (according to ISO 2853).....	2.2.1-39
Welding male, RJT (265)	2.2.1-39
Welding liner, RJT (266).....	2.2.1-39
Nut, RJT (267).....	2.2.1-41
Gasket, RJT (268).....	2.2.1-41

welding union DIN 11851-S (for tubing acc. DIN 11850 line 2) (212O)



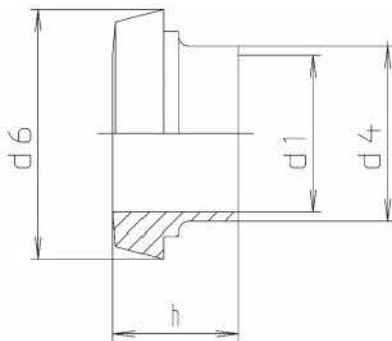
DN	d1	d4	d8	ll	weight (kg)
10	10	13	38	34	0,130
15	16	19	44	34	0,160
20	20	23	54	36	0,280
25	26	29	63	45	0,380
32	32	35	70	51	0,450
40	38	41	78	53	0,530
50	50	53	92	57	0,730
65	66	70	112	65	1,210
80	81	85	127	75	1,660
100	100	104	148	89	2,240
125	125	129	178	70	3,070
150	150	154	210	76	4,350

male part DIN 11851-SC



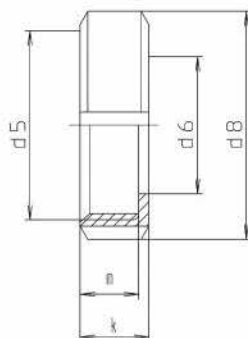
DN	c	d1	d4	d5	weight (kg)
10	21	10	13	28x1/8"	0,040
15	21	16	19	34x1/8"	0,050
20	24	20	23	44x1/6"	0,090
25	29	26	29	52x1/6"	0,120
32	32	32	35	58x1/6"	0,140
40	33	38	41	65x1/6"	0,160
50	35	50	53	78x1/6"	0,220
65	40	66	70	95x1/6"	0,380
80	45	81	85	110x1/4"	0,520
100	54	100	104	130x1/4"	0,620
125	46	125	129	160x1/4"	0,920
150	50	150	154	190x1/4"	1,550

welding liner DIN 11851- SD (acc. DIN 11850 line 2) (214O)



DN	d1	d4	d6	h	weight (kg)
10	10	13	22.5	17	0,010
15	16	19	28.5	17	0,020
20	20	23	36.5	18	0,040
25	26	29	44	22	0,080
32	32	35	50	25	0,090
40	38	41	56	26	0,120
50	50	53	68.5	28	0,170
65	66	70	86	32	0,280
80	81	85	100	37	0,340
100	100	104	121	44	0,540
125	125	129	150	34	0,700
150	150	154	176	37	0,920

nut DIN 11851-F (210)



DN	d5	d6	d8	k	m	weight (kg)
10	28x1/8"	19	38	18	15	0,070
15	34x1/8"	25	44	18	15	0,080
20	44x1/6"	31	54	20	17	0,130
25	52x1/6"	36	63	21	18	0,180
32	58x1/6"	42	70	21	18	0,220
40	65x1/6"	49	78	21	18	0,250
50	78x1/6"	62	92	22	19	0,340
65	95x1/6"	80	112	25	21	0,550
75	104x1/6"	88	119	25	21	0,650
80	110x1/4"	94	127	29	25	0,800
100	130x1/4"	115	148	31	26	1,080
125	160x1/4"	138	178	35	30	1,450
150	190x1/4"	164	210	40	34	1,880

t-pieces, short, DIN 11852 (for tubing acc. DIN 11850 line 2) (511IN)

DN	304 L polished Ident number	304 L matt Ident number	316 L polished Ident number	316 L matt Ident number
10	○ 127.04.11N.0005	○ 127.04.21N.0005	● 127.04.12N.0005	○ 127.04.22N.0005
15	○ 127.06.11N.0005	○ 127.06.21N.0005	● 127.06.12N.0005	○ 127.06.22N.0005
20	● 127.07.11N.0005	○ 127.07.21N.0005	● 127.07.12N.0005	○ 127.07.22N.0005
25	● 127.08.11N.0005	● 127.08.21N.0005	● 127.08.12N.0005	● 127.08.22N.0005
32	● 127.09.11N.0005	● 127.09.21N.0005	● 127.09.12N.0005	● 127.09.22N.0005
40	● 127.10.11N.0005	○ 127.10.21N.0005	● 127.10.12N.0005	○ 127.10.22N.0005
50	● 127.11.11N.0005	● 127.11.21N.0005	● 127.11.12N.0005	● 127.11.22N.0005
65	● 127.12.11N.0005	● 127.12.21N.0005	● 127.12.12N.0005	● 127.12.22N.0005
80	● 127.14.11N.0005	● 127.14.21N.0005	● 127.14.12N.0005	● 127.14.22N.0005
100	● 127.15.11N.0005	● 127.15.21N.0005	● 127.15.12N.0005	● 127.15.22N.0005
125	● 127.16.11N.0005	● 127.16.21N.0005	● 127.16.12N.0005	● 127.16.22N.0005
150	○ 127.17.11N.0005	○ 127.17.21N.0005	● 127.17.12N.0005	● 127.17.22N.0005

standard gasket NBR considered

t-pieces, short, DIN 11852 (for tubing acc. DIN 11850 line 2) (511IN)

DN	304 L polished Ident number	304 L matt Ident number	316 L polished Ident number	316 L matt Ident number
10	● 121.04.110.0005	○ 121.04.210.0005	● 121.04.120.0005	○ 121.04.220.0005
15	○ 121.06.110.0005	○ 121.06.210.0005	● 121.06.120.0005	○ 121.06.220.0005
20	● 121.07.110.0005	● 121.07.210.0005	● 121.07.120.0005	○ 121.07.220.0005
25	● 121.08.110.0005	● 121.08.210.0005	● 121.08.120.0005	● 121.08.220.0005
32	● 121.09.110.0005	● 121.09.210.0005	● 121.09.120.0005	● 121.09.220.0005
40	● 121.10.110.0005	● 121.10.210.0005	● 121.10.120.0005	● 121.10.220.0005
50	● 121.11.110.0005	● 121.11.210.0005	● 121.11.120.0005	● 121.11.220.0005
65	● 121.12.110.0005	● 121.12.210.0005	● 121.12.120.0005	● 121.12.220.0005
80	● 121.14.110.0005	● 121.14.210.0005	● 121.14.120.0005	● 121.14.220.0005
100	● 121.15.110.0005	● 121.15.210.0005	● 121.15.120.0005	● 121.15.220.0005
125	● 121.16.110.0005	● 121.16.210.0005	● 121.16.120.0005	● 121.16.220.0005
150	● 121.17.110.0005	● 121.17.210.0005	● 121.17.120.0005	● 121.17.220.0005

t-pieces, short, DIN 11852 (for tubing acc. DIN 11850 line 2) (511IN)

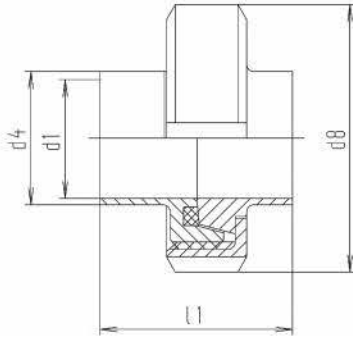
DN	304 L polished Ident number	304 L matt Ident number	316 L polished Ident number	316 L matt Ident number
10	○ 122.04.110.0005	○ 122.04.210.0005	● 122.04.120.0005	● 122.04.220.0005
15	○ 122.06.110.0005	○ 122.06.210.0005	● 122.06.120.0005	● 122.06.220.0005
20	● 122.07.110.0005	● 122.07.210.0005	● 122.07.120.0005	● 122.07.220.0005
25	● 122.08.110.0005	● 122.08.210.0005	● 122.08.120.0005	● 122.08.220.0005
32	● 122.09.110.0005	● 122.09.210.0005	● 122.09.120.0005	● 122.09.220.0005
40	● 122.10.110.0005	● 122.10.210.0005	● 122.10.120.0005	● 122.10.220.0005
50	● 122.11.110.0005	● 122.11.210.0005	● 122.11.120.0005	● 122.11.220.0005
65	● 122.12.110.0005	● 122.12.210.0005	● 122.12.120.0005	● 122.12.220.0005
80	● 122.14.110.0005	● 122.14.210.0005	● 122.14.120.0005	● 122.14.220.0005
100	● 122.15.110.0005	● 122.15.210.0005	● 122.15.120.0005	● 122.15.220.0005
125	● 122.16.110.0005	● 122.16.210.0005	● 122.16.120.0005	● 122.16.220.0005
150	○ 122.17.110.0005	○ 122.17.210.0005	● 122.17.120.0005	● 122.17.220.0005

t-pieces, short, DIN 11852 (for tubing acc. DIN 11850 line 2) (511IN)

DN	304 L polished Ident number	304 L matt Ident number	316 L polished Ident number	316 L matt Ident number
10	● 124.04.110.0000	● 124.04.210.0000	● 124.04.120.0000	● 124.04.220.0000
15	● 124.06.110.0000	● 124.06.210.0000	● 124.06.120.0000	● 124.06.220.0000
20	● 124.07.110.0000	● 124.07.210.0000	● 124.07.120.0000	● 124.07.220.0000
25	● 124.08.110.0000	● 124.08.210.0000	● 124.08.120.0000	● 124.08.220.0000
32	● 124.09.110.0000	● 124.09.210.0000	● 124.09.120.0000	● 124.09.220.0000
40	● 124.10.110.0000	● 124.10.210.0000	● 124.10.120.0000	● 124.10.220.0000
50	● 124.11.110.0000	● 124.11.210.0000	● 124.11.120.0000	● 124.11.220.0000
65	● 124.12.110.0000	● 124.12.210.0000	● 124.12.120.0000	● 124.12.220.0000
75	● 124.13.110.0000	● 124.13.210.0000	● 124.13.120.0000	● 124.13.220.0000
80	● 124.14.110.0000	● 124.14.210.0000	● 124.14.120.0000	● 124.14.220.0000
100	● 124.15.110.0000	● 124.15.210.0000	● 124.15.120.0000	● 124.15.220.0000
125	● 124.16.110.0000	● 124.16.210.0000	● 124.16.120.0000	● 124.16.220.0000
150	● 124.17.110.0000	● 124.17.210.0000	○ 124.17.120.0000	○ 124.17.220.0000

welding union DIN 11851 (for tubing acc. DIN 11850 line 2) (212O)

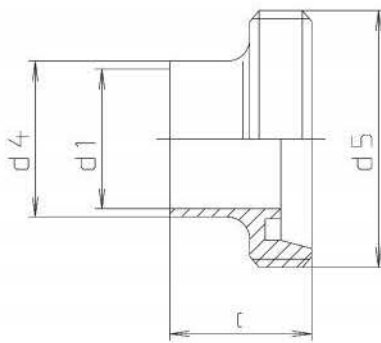
nocapius



DN	d1	d4	d8	l1	weight (kg)
10	10	13	38	34	0,130
15	16	19	44	34	0,160
20	20	23	54	36	0,280
25	26	29	63	45	0,380
32	32	35	70	51	0,450
40	38	41	78	53	0,530
50	50	53	92	57	0,730
65	66	70	112	65	1,210
80	81	85	127	75	1,660
100	100	104	148	89	2,240
125	125	129	178	70	3,070
150	150	154	210	76	4,350

male part DIN -SC 11851-SC

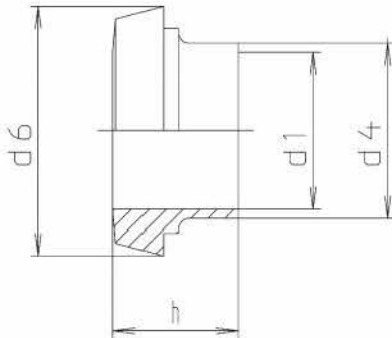
nocapius



DN	c	d1	d4	d5	weight (kg)
10	21	10	13	28x1/8"	0,040
15	21	16	19	34x1/8"	0,050
20	24	20	23	44x1/6"	0,090
25	29	26	29	52x1/6"	0,120
32	32	32	35	58x1/6"	0,140
40	33	38	41	65x1/6"	0,160
50	35	50	53	78x1/6"	0,220
65	40	66	70	95x1/6"	0,380
80	45	81	85	110x1/4"	0,520
100	54	100	104	130x1/4"	0,620
125	46	125	129	160x1/4"	0,920
150	50	150	154	190x1/4"	1,550

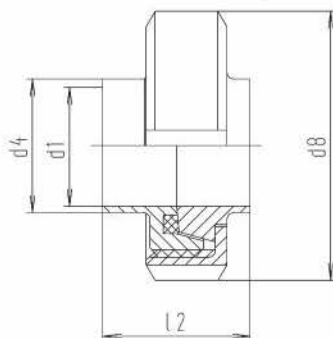
welding liner DIN 11851-SD (acc. DIN 11850 line 2) (214O)

nocapius



DN	d1	d4	d6	h	weight (kg)
10	10	13	22.5	17	0,010
15	16	19	28.5	17	0,020
20	20	23	36.5	18	0,040
25	26	29	44	22	0,080
32	32	35	50	25	0,090
40	38	41	56	26	0,120
50	50	53	68.5	28	0,170
65	66	70	86	32	0,280
80	81	85	100	37	0,340
100	100	104	121	44	0,540
125	125	129	150	34	0,700
150	150	154	176	37	0,920

union, short DIN 11851-SK (for tubing acc. DIN 11850 line 2) (212K)



DN	d1	d4	d8	l2	weight (kg)
10	10	13	38	26	0,130
15	16	19	44	26	0,150
20	20	23	54	26	0,250
25	26	29	63	30	0,360
32	32	35	70	30	0,440
40	38	41	78	30	0,500
50	50	53	92	32	0,680
65	66	70	112	34	1,030
80	81	85	127	34	1,460
100	100	104	148	40	2,040

t-pieces, short, DIN 11852 (for tubing acc. DIN 11850 line 2) (511IN)

DN	316 L polished Ident number	316 L matt Ident number
10	○ 127.04.12N.0305	○ 127.04.22N.0305
15	○ 127.06.12N.0305	○ 127.06.22N.0305
20	○ 127.07.12N.0305	○ 127.07.22N.0305
25	○ 127.08.12N.0305	○ 127.08.22N.0305
32	○ 127.09.12N.0305	○ 127.09.22N.0305
40	○ 127.10.12N.0305	○ 127.10.22N.0305
50	○ 127.11.12N.0305	○ 127.11.22N.0305
65	○ 127.12.12N.0305	○ 127.12.22N.0305
80	○ 127.14.12N.0305	○ 127.14.22N.0305
100	○ 127.15.12N.0305	○ 127.15.22N.0305
125	○ 127.16.12N.0305	○ 127.16.22N.0305
150	○ 127.17.12N.0305	○ 127.17.22N.0305

standard gasket NBR considered

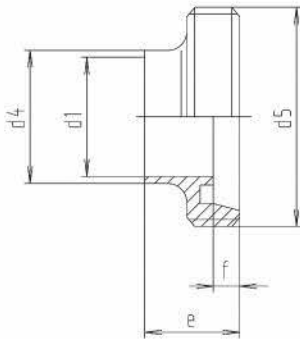
DN	316 L polished Ident number	316 L matt Ident number
10	○ 121.04.120.0305	○ 121.04.220.0305
15	○ 121.06.120.0305	○ 121.06.220.0305
20	○ 121.07.120.0305	○ 121.07.220.0305
25	○ 121.08.120.0305	○ 121.08.220.0305
32	○ 121.09.120.0305	○ 121.09.220.0305
40	○ 121.10.120.0305	○ 121.10.220.0305
50	○ 121.11.120.0305	○ 121.11.220.0305
65	○ 121.12.120.0305	○ 121.12.220.0305
80	○ 121.14.120.0305	○ 121.14.220.0305
100	○ 121.15.120.0305	○ 121.15.220.0305
125	○ 121.16.120.0305	○ 121.16.220.0305
150	○ 121.17.120.0305	○ 121.17.220.0305

DN	316 L polished Ident number	316 L matt Ident number
10	○ 122.04.120.0305	○ 122.04.220.0305
15	○ 122.06.120.0305	○ 122.06.220.0305
20	○ 122.07.120.0305	○ 122.07.220.0305
25	○ 122.08.120.0305	○ 122.08.220.0305
32	○ 122.09.120.0305	○ 122.09.220.0305
40	○ 122.10.120.0305	○ 122.10.220.0305
50	○ 122.11.120.0305	○ 122.11.220.0305
65	○ 122.12.120.0305	○ 122.12.220.0305
80	○ 122.14.120.0305	○ 122.14.220.0305
100	○ 122.15.120.0305	○ 122.15.220.0305
125	○ 122.16.120.0305	○ 122.16.220.0305
150	○ 122.17.120.0305	○ 122.17.220.0305

DN	304 L polished Ident number	304 L matt Ident number	316 L polished Ident number	316 L matt Ident number
10	○ 127.04.11N.0224	○ 127.04.21N.0224	○ 127.04.12N.0224	○ 127.04.22N.0224
15	○ 127.06.11N.0224	○ 127.06.21N.0224	○ 127.06.12N.0224	○ 127.06.22N.0224
20	○ 127.07.11N.0224	○ 127.07.21N.0224	○ 127.07.12N.0224	○ 127.07.22N.0224
25	● 127.08.11N.0224	● 127.08.21N.0224	● 127.08.12N.0224	● 127.08.22N.0224
32	● 127.09.11N.0224	● 127.09.21N.0224	● 127.09.12N.0224	● 127.09.22N.0224
40	● 127.10.11N.0224	● 127.10.21N.0224	● 127.10.12N.0224	● 127.10.22N.0224
50	● 127.11.11N.0224	● 127.11.21N.0224	● 127.11.12N.0224	● 127.11.22N.0224
65	● 127.12.11N.0224	● 127.12.21N.0224	● 127.12.12N.0224	● 127.12.22N.0224
80	● 127.14.11N.0224	● 127.14.21N.0224	● 127.14.12N.0224	● 127.14.22N.0224
100	● 127.15.11N.0224	● 127.15.21N.0224	● 127.15.12N.0224	● 127.15.22N.0224

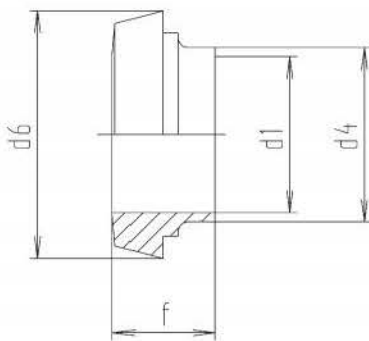
standard gasket NBR considered

welding male, short, DIN 11851-SKC (for tubing DIN 11850 line 2) (213K)



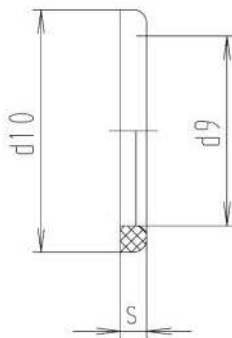
DN	d1	d4	d5	e	f	weight (kg)
10	10	13	28x1/8"	17	4	0,040
15	16	19	34x1/8"	17	4	0,050
20	20	23	44x1/6"	19	6	0,080
25	26	29	52x1/6"	22	7	0,110
32	32	35	58x1/6"	22	7	0,130
40	38	41	65x1/6"	22	7	0,150
50	50	53	78x1/6"	23	7	0,190
65	66	70	95x1/6"	25	8	0,280
80	81	85	110x1/4"	25	8	0,420
100	100	104	130x1/4"	30	10	0,570

welding liner short DIN 11851-SKD (acc. DIN 11850 line 2) (206K)



DN	d1	d4	d6	f	weight (kg)
10	10	13	22.5	13	0,020
15	16	19	28.5	13	0,025
20	20	23	36.5	13	0,040
25	26	29	44	15	0,070
32	32	35	50	15	0,090
40	38	41	56	15	0,100
50	50	53	68.5	16	0,120
65	66	70	86	17	0,200
80	81	85	100	17	0,240
100	100	104	121	20	0,390

gasket DIN 11851-G (211)



DN	d9	d10	s	weight (kg)
10	12	20	4.5	0,001
15	18	26	4.5	0,002
20	23	33	4.5	0,003
25	30	40	5	0,003
32	36	46	5	0,004
40	42	52	5	0,005
50	54	64	5	0,006
65	71	81	5	0,007
75/3*	78	88	5	0,009
80	85	95	5	0,009
100	104	114	6	0,013
125	130	142	7	0,022
150	155	167	7	0,027

t-pieces, short, DIN 11852 (for tubing acc. DIN 11850 line 2) (511IN)

DN	304 L polished Ident number	304 L matt Ident number	316 L polished Ident number	316 L matt Ident number
10	○ 221.04.110.0024	○ 221.04.210.0024	○ 221.04.120.0024	○ 221.04.220.0024
15	○ 221.06.110.0024	○ 221.06.210.0024	○ 221.06.120.0024	○ 221.06.220.0024
20	○ 221.07.110.0024	○ 221.07.210.0024	○ 221.07.120.0024	○ 221.07.220.0024
25	● 221.08.110.0024	● 221.08.210.0024	● 221.08.120.0024	● 221.08.220.0024
32	● 221.09.110.0024	● 221.09.210.0024	● 221.09.120.0024	● 221.09.220.0024
40	● 221.10.110.0024	● 221.10.210.0024	● 221.10.120.0024	● 221.10.220.0024
50	● 221.11.110.0024	● 221.11.210.0024	● 221.11.120.0024	● 221.11.220.0024
65	● 221.12.110.0024	● 221.12.210.0024	● 221.12.120.0024	● 221.12.220.0024
80	● 221.14.110.0024	● 221.14.210.0024	● 221.14.120.0024	● 221.14.220.0024
100	● 221.15.110.0024	● 221.15.210.0024	● 221.15.120.0024	● 221.15.220.0024

t-pieces, short, DIN 11852 (for tubing acc. DIN 11850 line 2) (511IN)

DN	304 L polished Ident number	304 L matt Ident number	316 L polished Ident number	316 L matt Ident number
10	○ 222.04.110.0024	○ 222.04.210.0024	○ 222.04.120.0024	○ 222.04.220.0024
15	○ 222.06.110.0024	○ 222.06.210.0024	○ 222.06.120.0024	○ 222.06.220.0024
20	○ 222.07.110.0024	○ 222.07.210.0024	○ 222.07.120.0024	○ 222.07.220.0024
25	● 222.08.110.0024	● 222.08.210.0024	● 222.08.120.0024	● 222.08.220.0024
32	● 222.09.110.0024	● 222.09.210.0024	● 222.09.120.0024	● 222.09.220.0024
40	● 222.10.110.0024	● 222.10.210.0024	● 222.10.120.0024	● 222.10.220.0024
50	● 222.11.110.0024	● 222.11.210.0024	● 222.11.120.0024	● 222.11.220.0024
65	● 222.12.110.0024	● 222.12.210.0024	● 222.12.120.0024	● 222.12.220.0024
80	● 222.14.110.0024	● 222.14.210.0024	● 222.14.120.0024	● 222.14.220.0024
100	● 222.15.110.0024	● 222.15.210.0024	● 222.15.120.0024	● 222.15.220.0024

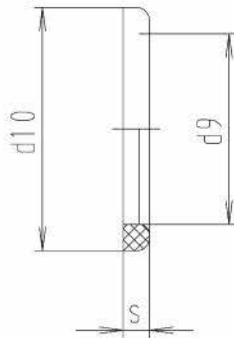
Rohr nach DIN 11850 Reihe 2

DN	EPDM Ident number	HNBR Ident number	NBR Ident number	MVQ transparent Ident number
10	● 822.04.6E0.0000	○ 822.04.6HN.0000	● 822.04.6N0.0000	● 822.04.6S0.0000
15	● 822.06.6E0.0000	○ 822.06.6HN.0000	● 822.06.6N0.0000	● 822.06.6S0.0000
20	● 822.07.6E0.0000	○ 822.07.6HN.0000	● 822.07.6N0.0000	● 822.07.6S0.0000
25	● 822.08.6E0.0000	● 822.08.6HN.0000	● 822.08.6N0.0000	● 822.08.6S0.0000
32	● 822.09.6E0.0000	● 822.09.6HN.0000	● 822.09.6N0.0000	● 822.09.6S0.0000
40	● 822.10.6E0.0000	● 822.10.6HN.0000	● 822.10.6N0.0000	● 822.10.6S0.0000
50	● 822.11.6E0.0000	● 822.11.6HN.0000	● 822.11.6N0.0000	● 822.11.6S0.0000
65	● 822.12.6E0.0000	● 822.12.6HN.0000	● 822.12.6N0.0000	● 822.12.6S0.0000
75/3"	● 822.13.6E0.0000	○ 822.13.6HN.0000	● 822.13.6N0.0000	● 822.13.6S0.0000
80	● 822.14.6E0.0000	● 822.14.6HN.0000	● 822.14.6N0.0000	● 822.14.6S0.0000
100	● 822.15.6E0.0000	● 822.15.6HN.0000	● 822.15.6N0.0000	● 822.15.6S0.0000
125	● 822.16.6E0.0000	● 822.16.6HN.0000	● 822.16.6N0.0000	● 822.16.6S0.0000
150	● 822.17.6E0.0000	● 822.17.6HN.0000	● 822.17.6N0.0000	● 822.17.6S0.0000

Rohr nach DIN 11850 Reihe 2

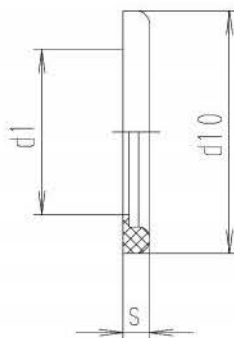
DN	PTFE Ident number	FPM Ident number
10	● 822.04.6T0.0000	● 822.04.6V0.0000
15	● 822.06.6T0.0000	● 822.06.6V0.0000
20	● 822.07.6T0.0000	● 822.07.6V0.0000
25	● 822.08.6T0.0000	● 822.08.6V0.0000
32	● 822.09.6T0.0000	● 822.09.6V0.0000
40	● 822.10.6T0.0000	● 822.10.6V0.0000
50	● 822.11.6T0.0000	● 822.11.6V0.0000
65	● 822.12.6T0.0000	● 822.12.6V0.0000
75/3"	● 822.13.6T0.0000	● 822.13.6V0.0000
80	● 822.14.6T0.0000	● 822.14.6V0.0000
100	● 822.15.6T0.0000	● 822.15.6V0.0000
125	● 822.16.6T0.0000	● 822.16.6V0.0000
150	● 822.17.6T0.0000	● 822.17.6V0.0000

gasket 8 mm, DIN 11851-G (2II)



DN	d9	d10	s	weight (kg)
25	30	40	8	0,006
32	36	46	8	0,007
40	42	52	8	0,008
50	54	64	8	0,009
65	71	81	8	0,012
80	85	95	8	0,014
100	104	114	8	0,017

gasket lipped for DIN 11851 (2III)



DN	d1	d10	s	weight (kg)
10	10	20	4.5	0,001
15	16	26	4.5	0,002
20	20	33	4.5	0,003
25	26	40	5	0,004
32	32	46	5	0,005
40	38	52	5	0,006
50	50	64	5	0,008
65	66	81	5	0,010
80	81	95	5	0,011
100	100	114	6	0,014
125	125	142	7	0,025
150	150	167	7	0,030

centring ring, with special gasket for union DIN 11851

nocapius



DN	weight (kg)
25	-
32	-
40	-
50	-
65	-
75/3*	-
80	-
100	-

gasket for centring ring for union DIN 11851

nocapius



DN	weight (kg)
25	-
32	-
40	-
50	-
65	-
80	-
100	-

t-pieces, short, DIN 11852 (for tubing acc. DIN 11850 line 2) (511IN)

DN	EPDM Ident number	NBR Ident number	MVQ Ident number	FPM Ident number
25	● 822.08.6E0.0001	● 822.08.6N0.0001	○ 822.08.6S0.0001	○ 822.08.6V0.0001
32	● 822.09.6E0.0001	● 822.09.6N0.0001	○ 822.09.6S0.0001	○ 822.09.6V0.0001
40	● 822.10.6E0.0001	● 822.10.6N0.0001	○ 822.10.6S0.0001	○ 822.10.6V0.0001
50	● 822.11.6E0.0001	● 822.11.6N0.0001	○ 822.11.6S0.0001	● 822.11.6V0.0001
65	● 822.12.6E0.0001	● 822.12.6N0.0001	○ 822.12.6S0.0001	● 822.12.6V0.0001
80	● 822.14.6E0.0001	● 822.14.6N0.0001	○ 822.14.6S0.0001	● 822.14.6V0.0001
100	● 822.15.6E0.0001	● 822.15.6N0.0001	○ 822.15.6S0.0001	● 822.15.6V0.0001

DN	EPDM Ident number	NBR Ident number	MVQ Ident number	FPM Ident number
10	● 822.04.6E0.0002	● 822.04.6N0.0002	○ 822.04.6S0.0002	○ 822.04.6V0.0002
15	● 822.06.6E0.0002	● 822.06.6N0.0002	● 822.06.6S0.0002	○ 822.06.6V0.0002
20	● 822.07.6E0.0002	● 822.07.6N0.0002	○ 822.07.6S0.0002	● 822.07.6V0.0002
25	● 822.08.6E0.0002	● 822.08.6N0.0002	○ 822.08.6S0.0002	○ 822.08.6V0.0002
32	● 822.09.6E0.0002	● 822.09.6N0.0002	○ 822.09.6S0.0002	○ 822.09.6V0.0002
40	● 822.10.6E0.0002	● 822.10.6N0.0002	○ 822.10.6S0.0002	● 822.10.6V0.0002
50	● 822.11.6E0.0002	● 822.11.6N0.0002	○ 822.11.6S0.0002	○ 822.11.6V0.0002
65	● 822.12.6E0.0002	● 822.12.6N0.0002	● 822.12.6S0.0002	○ 822.12.6V0.0002
80	● 822.14.6E0.0002	● 822.14.6N0.0002	○ 822.14.6S0.0002	○ 822.14.6V0.0002
100	● 822.15.6E0.0002	● 822.15.6N0.0002	● 822.15.6S0.0002	● 822.15.6V0.0002
125	○ 822.16.6E0.0002	○ 822.16.6N0.0002	○ 822.16.6S0.0002	○ 822.16.6V0.0002
150	● 822.17.6E0.0002	○ 822.17.6N0.0002	○ 822.17.6S0.0002	○ 822.17.6V0.0002

DN	316 L polished Ident number
25	○ 129.08.120.0000
32	○ 129.09.120.0000
40	○ 129.10.120.0000
50	○ 129.11.120.0000
65	○ 129.12.120.0000
75/3"	○ 129.13.120.0000
80	○ 129.14.120.0000
100	○ 129.15.120.0000

DN	EPDM Ident number	NBR Ident number	MVQ Ident number	FPM Ident number
25	○ 822.08.6E0.0003	○ 822.08.6N0.0003	○ 822.08.6S0.0003	○ 822.08.6V0.0003
32	○ 822.09.6E0.0003	○ 822.09.6N0.0003	○ 822.09.6S0.0003	○ 822.09.6V0.0003
40	○ 822.10.6E0.0003	○ 822.10.6N0.0003	○ 822.10.6S0.0003	○ 822.10.6V0.0003
50	○ 822.11.6E0.0003	○ 822.11.6N0.0003	○ 822.11.6S0.0003	○ 822.11.6V0.0003
65	○ 822.12.6E0.0003	○ 822.12.6N0.0003	○ 822.12.6S0.0003	○ 822.12.6V0.0003
80	○ 822.14.6E0.0003	○ 822.14.6N0.0003	○ 822.14.6S0.0003	○ 822.14.6V0.0003
100	○ 822.15.6E0.0003	○ 822.15.6N0.0003	○ 822.15.6S0.0003	○ 822.15.6V0.0003

gasket for centring ring inch

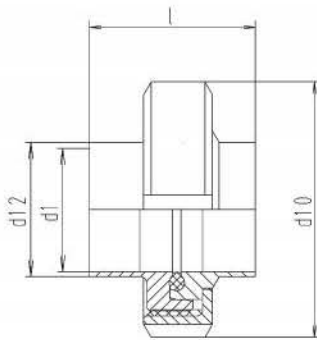
nocapius



DN	weight (kg)
1"	-
1¼"	-
1½"	-
2"	-
2½"	-
3"	-
4"	-

welding union aseptic, short, DIN 11864 (for tubing acc. DIN 11850 line 2)

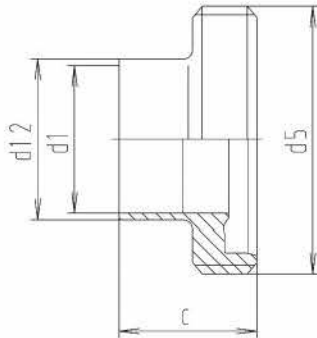
nocapius



DN	d1	d10	d12	l	weight (kg)
10	10	38	13	32	0,126
15	16	44	19	32	0,160
20	20	54	23	34	0,273
25	25	63	29	42	0,385
32	32	70	35	48	0,455
40	38	78	41	50	0,537
50	50	92	53	54	0,732
65	66	112	70	62	1,195
80	81	127	85	72	1,682
100	100	148	104	86	2,308

welding male, aseptic, short, DIN 11864 (for tub. acc. DIN 11850 line 2) (250A)

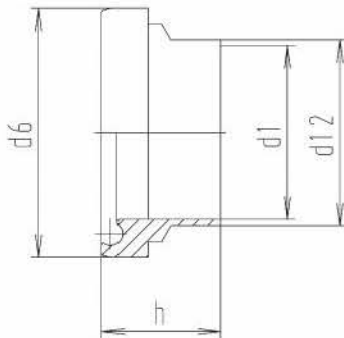
nocapius



DN	c	d1	d5	d12	weight (kg)
10	19	10	28x1/8"	13	0,036
15	19	16	34x1/8"	19	0,050
20	21	20	44x1/6"	23	0,093
25	26	26	52x1/6"	29	0,125
32	30	32	58x1/6"	35	0,138
40	31	38	65x1/6"	41	0,172
50	31	50	78x1/6"	53	0,226
65	36	66	95x1/6"	70	0,347
80	42	81	110x1/4"	85	0,532
100	50	100	130x1/4"	104	0,646

liner, aseptic, DIN 11864 (for tubing acc. DIN 11850 line 2)

nocapius



DN	d1	d6	d12	h	weight (kg)
10	10	21.9	13	17	0,020
15	16	27.9	19	17	0,030
20	20	35.9	23	18	0,050
25	26	42.9	29	22	0,080
32	32	48.9	35	25	0,097
40	38	54.9	41	26	0,115
50	50	66.9	53	30	0,166
65	66	84.9	70	34	0,298
80	81	98.9	85	38	0,350
100	100	118.9	104	46	0,582

t-pieces, short, DIN 11852 (for tubing acc. DIN 11850 line 2) (5111N)

DN	EPDM Ident number	NBR Ident number	MVQ Ident number	FPM Ident number
1"	○ 822.08.6E0.0004	○ 822.08.6N0.0004	○ 822.08.6S0.0004	○ 822.08.6V0.0004
1¼"	○ 822.09.6E0.0004	○ 822.09.6N0.0004	○ 822.09.6S0.0004	○ 822.09.6V0.0004
1½"	○ 822.10.6E0.0004	○ 822.10.6N0.0004	○ 822.10.6S0.0004	○ 822.10.6V0.0004
2"	○ 822.11.6E0.0004	○ 822.11.6N0.0004	○ 822.11.6S0.0004	○ 822.11.6V0.0004
2½"	○ 822.12.6E0.0004	○ 822.12.6N0.0004	○ 822.12.6S0.0004	○ 822.12.6V0.0004
3"	○ 822.13.6E0.0004	○ 822.13.6N0.0004	○ 822.13.6S0.0004	○ 822.13.6V0.0004
4"	○ 822.15.6E0.0004	○ 822.15.6N0.0004	○ 822.15.6S0.0004	○ 822.15.6V0.0004

DN	316 L polished Ident number
10	● 127.04.12E.0070
15	● 127.06.12E.0070
20	● 127.07.12E.0070
25	● 127.08.12E.0070
32	● 127.09.12E.0070
40	● 127.10.12E.0070
50	● 127.11.12E.0070
65	● 127.12.12E.0070
80	● 127.14.12E.0070
100	● 127.15.12E.0070

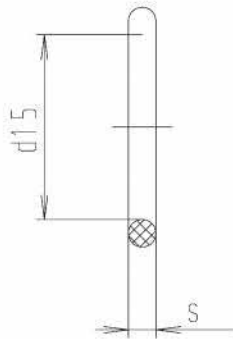
standard gasket EPDM considered

DN	316 L polished Ident number
10	● 121.04.120.0050
15	● 121.06.120.0050
20	● 121.07.120.0050
25	● 121.08.120.0050
32	● 121.09.120.0050
40	● 121.10.120.0050
50	● 121.11.120.0050
65	● 121.12.120.0050
80	● 121.14.120.0050
100	● 121.15.120.0050

DN	316 L polished Ident number
10	● 122.04.120.0050
15	● 122.06.120.0050
20	● 122.07.120.0050
25	● 122.08.120.0050
32	● 122.09.120.0050
40	● 122.10.120.0050
50	● 122.11.120.0050
65	● 122.12.120.0050
80	● 122.14.120.0050
100	● 122.15.120.0050

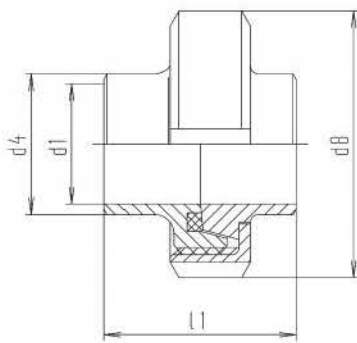
o-ring aseptic DIN 11864-R (252)

nocapius



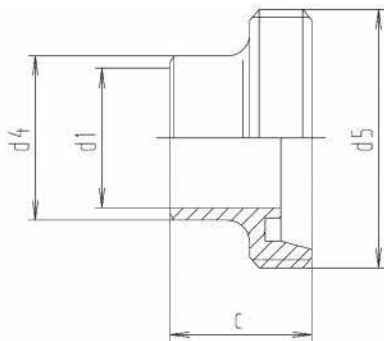
DN	d15	s	weight (kg)
10	12	3.5	0,001
15	18	3.5	0,001
20	22	3.5	0,001
25	28	3.5	0,002
32	34	5	0,003
40	40	5	0,003
50	52	5	0,004
65	68	5	0,005
80	83	5	0,006
100	102	5	0,008

welding union similar to DIN 11851-S (212A)



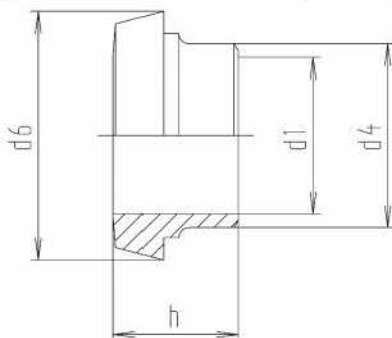
DN	d1	d4	d8	l1	weight (kg)
10	10	15	38	34	0,130
15	16	21	44	34	0,160
20	20	25	54	36	0,280
25	26	31	63	45	0,390
32	32	37	70	51	0,470
40	38	43	78	53	0,550
50	50	55	92	57	0,770
65	66	72	112	65	1,240
80	81	87	127	75	1,730
100	100	106	148	89	2,400
125	125	132	178	70	3,270
150	150	157	210	76	4,630

male part DIN 11851-SC



DN	c	d1	d4	d5	weight (kg)
10	21	10	15	28x1/8"	0,040
15	21	16	21	34x1/8"	0,050
20	24	20	25	44x1/6"	0,090
25	29	26	31	52x1/6"	0,120
32	32	32	37	58x1/6"	0,140
40	33	38	43	65x1/6"	0,170
50	35	50	55	78x1/6"	0,240
65	40	66	72	95x1/6"	0,380
80	45	81	87	110x1/4"	0,550
100	54	100	106	130x1/4"	0,710
125	46	125	132	160x1/4"	1,020
150	50	150	157	190x1/4"	1,710

welding liner DIN 11851-SD (welding bevel acc. DIN 11850) (214)



DN	d1	d4	d6	h	weight (kg)
10	10	15	22.5	17	0,020
15	16	21	28.5	17	0,030
20	20	25	36.5	18	0,060
25	26	31	44	22	0,090
32	32	37	50	25	0,110
40	38	43	56	26	0,130
50	50	55	68.5	28	0,190
65	66	72	86	32	0,310
80	81	87	100	37	0,380
100	100	106	121	44	0,610
125	125	132	150	34	0,800
150	150	157	176	37	1,040

t-pieces, short, DIN 11852 (for tubing acc. DIN 11850 line 2) (5111N)

DN	EPDM Ident number	FPM Ident number
10	● 827.04.6E0.0237	● 827.04.6V0.0237
15	● 827.06.6E0.0237	● 827.06.6V0.0237
20	● 827.07.6E0.0237	● 827.07.6V0.0237
25	● 827.08.6E0.0237	● 827.08.6V0.0237
32	● 827.09.6E0.0237	● 827.09.6V0.0237
40	● 827.10.6E0.0237	● 827.10.6V0.0237
50	● 827.11.6E0.0237	● 827.11.6V0.0237
65	● 827.12.6E0.0237	● 827.12.6V0.0237
80	● 827.14.6E0.0237	● 827.14.6V0.0237
100	● 827.15.6E0.0237	● 827.15.6V0.0237

t-pieces, short, DIN 11852 (for tubing acc. DIN 11850 line 2) (5111N)

DN	304 L polished Ident number	304 L matt Ident number	316 L polished Ident number	316 L matt Ident number
10	● 127.04.11N.0001	● 127.04.21N.0001	● 127.04.12N.0001	○ 127.04.22N.0001
15	● 127.06.11N.0001	● 127.06.21N.0001	● 127.06.12N.0001	● 127.06.22N.0001
20	● 127.07.11N.0001	● 127.07.21N.0001	● 127.07.12N.0001	● 127.07.22N.0001
25	● 127.08.11N.0001	● 127.08.21N.0001	● 127.08.12N.0001	● 127.08.22N.0001
32	● 127.09.11N.0001	● 127.09.21N.0001	● 127.09.12N.0001	● 127.09.22N.0001
40	● 127.10.11N.0001	● 127.10.21N.0001	● 127.10.12N.0001	● 127.10.22N.0001
50	● 127.11.11N.0001	● 127.11.21N.0001	● 127.11.12N.0001	● 127.11.22N.0001
65	● 127.12.11N.0001	● 127.12.21N.0001	● 127.12.12N.0001	● 127.12.22N.0001
80	● 127.14.11N.0001	● 127.14.21N.0001	● 127.14.12N.0001	● 127.14.22N.0001
100	● 127.15.11N.0001	● 127.15.21N.0001	● 127.15.12N.0001	● 127.15.22N.0001
125	● 127.16.11N.0001	○ 127.16.21N.0001	● 127.16.12N.0001	○ 127.16.22N.0001
150	● 127.17.11N.0001	○ 127.17.21N.0001	● 127.17.12N.0001	○ 127.17.22N.0001

standard gasket NBR considered

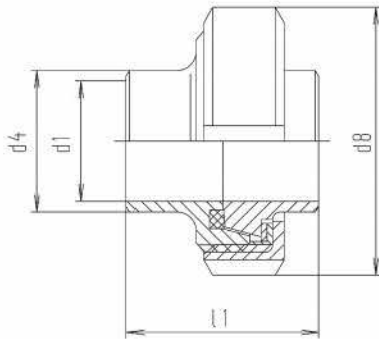
t-pieces, short, DIN 11852 (for tubing acc. DIN 11850 line 2) (5111N)

DN	304 L polished Ident number	304 L matt Ident number	316 L polished Ident number	316 L matt Ident number
10	● 121.04.110.0001	● 121.04.210.0001	● 121.04.120.0001	● 121.04.220.0001
15	● 121.06.110.0001	● 121.06.210.0001	● 121.06.120.0001	● 121.06.220.0001
20	● 121.07.110.0001	● 121.07.210.0001	● 121.07.120.0001	● 121.07.220.0001
25	● 121.08.110.0001	● 121.08.210.0001	● 121.08.120.0001	● 121.08.220.0001
32	● 121.09.110.0001	● 121.09.210.0001	● 121.09.120.0001	● 121.09.220.0001
40	● 121.10.110.0001	● 121.10.210.0001	● 121.10.120.0001	● 121.10.220.0001
50	● 121.11.110.0001	● 121.11.210.0001	● 121.11.120.0001	● 121.11.220.0001
65	● 121.12.110.0001	● 121.12.210.0001	● 121.12.120.0001	● 121.12.220.0001
80	● 121.14.110.0001	● 121.14.210.0001	● 121.14.120.0001	● 121.14.220.0001
100	● 121.15.110.0001	● 121.15.210.0001	● 121.15.120.0001	● 121.15.220.0001
125	● 121.16.110.0001	● 121.16.210.0001	● 121.16.120.0001	● 121.16.220.0001
150	● 121.17.110.0001	● 121.17.210.0001	● 121.17.120.0001	● 121.17.220.0001

t-pieces, short, DIN 11852 (for tubing acc. DIN 11850 line 2) (5111N)

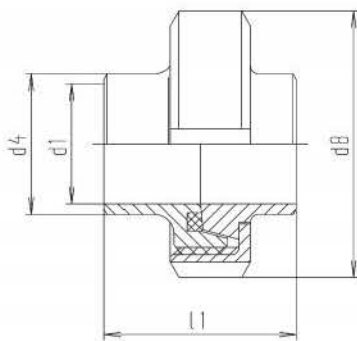
DN	304 L polished Ident number	304 L matt Ident number	316 L polished Ident number	316 L matt Ident number
10	● 122.04.110.0001	● 122.04.210.0001	● 122.04.120.0001	● 122.04.220.0001
15	● 122.06.110.0001	● 122.06.210.0001	● 122.06.120.0001	● 122.06.220.0001
20	● 122.07.110.0001	● 122.07.210.0001	● 122.07.120.0001	● 122.07.220.0001
25	● 122.08.110.0001	● 122.08.210.0001	● 122.08.120.0001	● 122.08.220.0001
32	● 122.09.110.0001	● 122.09.210.0001	● 122.09.120.0001	● 122.09.220.0001
40	● 122.10.110.0001	● 122.10.210.0001	● 122.10.120.0001	● 122.10.220.0001
50	● 122.11.110.0001	● 122.11.210.0001	● 122.11.120.0001	● 122.11.220.0001
65	● 122.12.110.0001	● 122.12.210.0001	● 122.12.120.0001	● 122.12.220.0001
80	● 122.14.110.0001	● 122.14.210.0001	● 122.14.120.0001	● 122.14.220.0001
100	● 122.15.110.0001	● 122.15.210.0001	● 122.15.120.0001	● 122.15.220.0001
125	● 122.16.110.0001	● 122.16.210.0001	● 122.16.120.0001	○ 122.16.220.0001
150	● 122.17.110.0001	○ 122.17.210.0001	● 122.17.120.0001	○ 122.17.220.0001

welding union, swivel connection, similar to DIN 11851-S



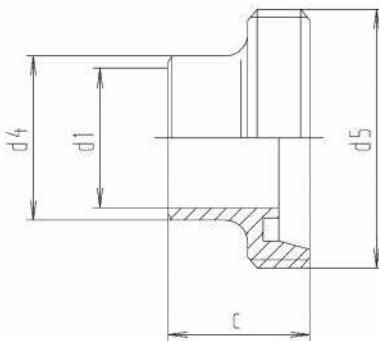
DN	d1	d4	d8	l1	weight (kg)
25	26	31	63	44	0,390
32	32	37	70	50	0,470
40	38	43	78	52	0,550
50	50	55	92	56	0,770
65	66	72	112	64	1,240
80	81	87	127	74	1,730
100	100	106	148	88	2,400

welding union similar to DIN 11851-S (212A)



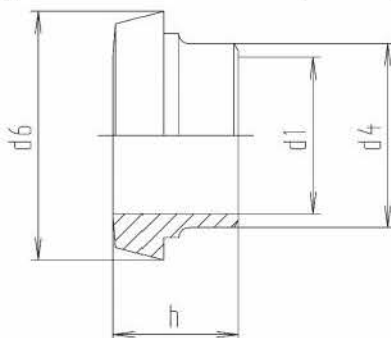
DN	d1	d4	d8	l1	weight (kg)
10	10	15	38	34	0,130
15	16	21	44	34	0,160
20	20	25	54	36	0,280
25	26	31	63	45	0,390
32	32	37	70	51	0,470
40	38	43	78	53	0,550
50	50	55	92	57	0,770
65	66	72	112	65	1,240
80	81	87	127	75	1,730
100	100	106	148	89	2,400
125	125	132	178	70	3,270
150	150	157	210	76	4,630

male part DIN 11851-SC



DN	c	d1	d4	d5	nw	weight (kg)
10	21	10	15	28x1/8"	10	0,040
15	21	16	21	34x1/8"	15	0,050
20	24	20	25	44x1/6"	20	0,090
25	29	26	31	52x1/6"	25	0,120
32	32	32	37	58x1/6"	32	0,140
40	33	38	43	65x1/6"	40	0,170
50	35	50	55	78x1/6"	50	0,240
65	40	66	72	95x1/6"	65	0,380
80	45	81	87	110x1/4"	80	0,550
100	54	100	106	130x1/4"	100	0,710
125	46	125	132	160x1/4"	125	1,020
150	50	150	157	190x1/4"	150	1,710

welding liner DIN 11851-SD (welding bevel acc. DIN 11850) (214)



DN	d1	d4	d6	h	nw	weight (kg)
10	10	15	22,5	17	10	0,020
15	16	21	28,5	17	15	0,030
20	20	25	36,5	18	20	0,060
25	26	31	44	22	25	0,090
32	32	37	50	25	32	0,110
40	38	43	56	26	40	0,130
50	50	55	68,5	28	50	0,190
65	66	72	86	32	65	0,310
80	81	87	100	37	80	0,380
100	100	106	121	44	100	0,610
125	125	132	150	34	125	0,800
150	150	157	176	37	150	1,040

t-pieces, short, DIN 11852 (for tubing acc. DIN 11850 line 2) (5111N)

304 L polished	
DN	Ident number
25	o 127.08.11N.0023
32	o 127.09.11N.0023
40	o 127.10.11N.0023
50	o 127.11.11N.0023
65	o 127.12.11N.0023
80	o 127.14.11N.0023
100	o 127.15.11N.0023

standard gasket NBR considered

t-pieces, short, DIN 11852 (for tubing acc. DIN 11850 line 2) (5111N)

DN	316 L polished		316 L matt	
	Ident number		Ident number	
10	o 127.04.12N.0301		o 127.04.22N.0301	
15	o 127.06.12N.0301		o 127.06.22N.0301	
20	o 127.07.12N.0301		o 127.07.22N.0301	
25	o 127.08.12N.0301		o 127.08.22N.0301	
32	o 127.09.12N.0301		o 127.09.22N.0301	
40	o 127.10.12N.0301		o 127.10.22N.0301	
50	o 127.11.12N.0301		o 127.11.22N.0301	
65	o 127.12.12N.0301		o 127.12.22N.0301	
80	o 127.14.12N.0301		o 127.14.22N.0301	
100	o 127.15.12N.0301		o 127.15.22N.0301	
125	o 127.16.12N.0301		o 127.16.22N.0301	
150	o 127.17.12N.0301		o 127.17.22N.0301	

standard gasket NBR considered

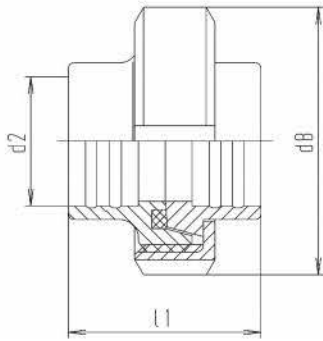
t-pieces, short, DIN 11852 (for tubing acc. DIN 11850 line 2) (5111N)

DN	316 L polished		316 L matt	
	Ident number		Ident number	
10	o 121.04.120.0301		o 121.04.220.0301	
15	o 121.06.120.0301		o 121.06.220.0301	
20	o 121.07.120.0301		o 121.07.220.0301	
25	o 121.08.120.0301		o 121.08.220.0301	
32	o 121.09.120.0301		o 121.09.220.0301	
40	o 121.10.120.0301		o 121.10.220.0301	
50	o 121.11.120.0301		o 121.11.220.0301	
65	o 121.12.120.0301		o 121.12.220.0301	
80	o 121.14.120.0301		o 121.14.220.0301	
100	o 121.15.120.0301		o 121.15.220.0301	
125	o 121.16.120.0301		o 121.16.220.0301	
150	o 121.17.120.0301		o 121.17.220.0301	

t-pieces, short, DIN 11852 (for tubing acc. DIN 11850 line 2) (5111N)

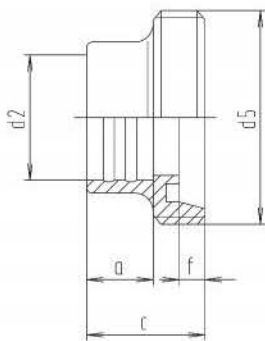
DN	316 L polished		316 L matt	
	Ident number		Ident number	
10	o 122.04.120.0301		o 122.04.220.0301	
15	o 122.06.120.0301		o 122.06.220.0301	
20	o 122.07.120.0301		o 122.07.220.0301	
25	o 122.08.120.0301		o 122.08.220.0301	
32	o 122.09.120.0301		o 122.09.220.0301	
40	o 122.10.120.0301		o 122.10.220.0301	
50	o 122.11.120.0301		o 122.11.220.0301	
65	o 122.12.120.0301		o 122.12.220.0301	
80	o 122.14.120.0301		o 122.14.220.0301	
100	o 122.15.120.0301		o 122.15.220.0301	
125	o 122.16.120.0301		o 122.16.220.0301	
150	o 122.17.120.0301		o 122.17.220.0301	

union, expanding, DIN 11851 (for tubing acc. DIN 11850 line I)



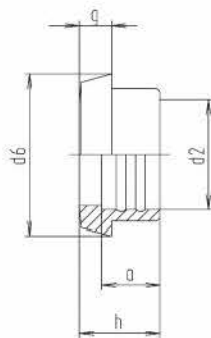
DN	d2	d8	l1	weight (kg)
10	12.2	38	34	0,130
15	18.2	44	34	0,160
20	22.2	54	36	0,290
25	28.2	63	45	0,400
32	34.2	70	51	0,490
40	40.2	78	53	0,610
50	52.2	92	57	0,860
65	70.3	112	65	1,330
80	85.3	127	75	1,800
100	104.3	148	89	2,460
125	129.4	178	70	3,700
150	154.4	210	76	4,950

male DIN 11851-C expanding (for tubing DIN 11850 line I) (205)



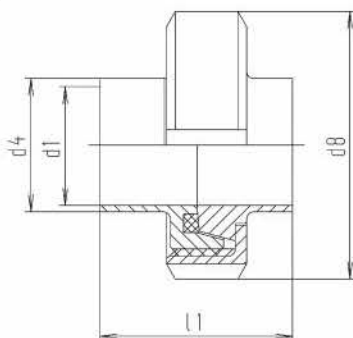
DN	a	c	d2	d5	f	weight (kg)
10	12	21	12.2	28x1/8"	4	0,040
15	12	21	18.2	34x1/8"	4	0,050
20	12	24	22.2	44x1/6"	6	0,100
25	15	29	28.2	52x1/6"	7	0,130
32	18	32	34.2	58x1/6"	7	0,160
40	20	33	40.2	65x1/6"	7	0,210
50	22	35	52.2	78x1/6"	7	0,300
65	25	40	70.3	95x1/6"	8	0,450
80	28	45	85.3	110x1/4"	8	0,600
100	35	54	104.3	130x1/4"	10	0,780
125	10	46	129.4	160x1/4"	12	1,120
150	12	50	154.4	190x1/4"	13	1,910

liner DIN 11851, expanding-D (for tubing acc. DIN 11850 line I) (206)



DN	a	d2	d6	g	h	weight (kg)
10	12	12.2	22.5	6	17	0,020
15	12	18.2	28.5	6	17	0,030
20	12	22.2	36.5	8	18	0,060
25	15	28.2	44	10	22	0,090
32	18	34.2	50	10	25	0,110
40	20	40.2	56	10	26	0,140
50	22	52.2	68.5	11	28	0,210
65	25	70.3	86	12	32	0,320
80	28	85.3	100	12	37	0,390
100	35	104.3	121	15	44	0,590
125	10	129.4	150	17	34	1,110
150	12	154.4	176	18	37	1,130

welding union similar to DIN 11851-S, inch (212Z)



DN	d1	d4	d8	l1	weight (kg)
1"	22.1	25.4	63	45	0,420
1¼"	28.5	31.8	70	51	0,510
1½"	34.8	38.1	78	53	0,610
2"	47.5	50.8	92	57	0,830
2½"	60.2	63.5	112	65	1,390
3"	72.9	76.2	119	75	1,500
4"	97.4	101.6	148	89	2,920

t-pieces, short, DIN 11852 (for tubing acc. DIN 11850 line 2) (511IN)

DN	304 L polished Ident number	304 L matt Ident number	316 L polished Ident number	316 L matt Ident number
10	○ 127.04.11N.0000	○ 127.04.21N.0000	○ 127.04.12N.0000	○ 127.04.22N.0000
15	○ 127.06.11N.0000	○ 127.06.21N.0000	○ 127.06.12N.0000	○ 127.06.22N.0000
20	● 127.07.11N.0000	○ 127.07.21N.0000	○ 127.07.12N.0000	○ 127.07.22N.0000
25	● 127.08.11N.0000	○ 127.08.21N.0000	● 127.08.12N.0000	○ 127.08.22N.0000
32	○ 127.09.11N.0000	○ 127.09.21N.0000	○ 127.09.12N.0000	○ 127.09.22N.0000
40	● 127.10.11N.0000	○ 127.10.21N.0000	● 127.10.12N.0000	● 127.10.22N.0000
50	● 127.11.11N.0000	● 127.11.21N.0000	● 127.11.12N.0000	● 127.11.22N.0000
65	● 127.12.11N.0000	○ 127.12.21N.0000	● 127.12.12N.0000	● 127.12.22N.0000
80	● 127.14.11N.0000	○ 127.14.21N.0000	● 127.14.12N.0000	● 127.14.22N.0000
100	● 127.15.11N.0000	○ 127.15.21N.0000	● 127.15.12N.0000	● 127.15.22N.0000
125	○ 127.16.11N.0000	○ 127.16.21N.0000	○ 127.16.12N.0000	○ 127.16.22N.0000
150	○ 127.17.11N.0000	○ 127.17.21N.0000	○ 127.17.12N.0000	○ 127.17.22N.0000

standard gasket NBR considered

t-pieces, short, DIN 11852 (for tubing acc. DIN 11850 line 2) (511IN)

DN	304 L polished Ident number	304 L matt Ident number	316 L polished Ident number	316 L matt Ident number
10	○ 121.04.110.0000	○ 121.04.210.0000	○ 121.04.120.0000	○ 121.04.220.0000
15	● 121.06.110.0000	● 121.06.210.0000	● 121.06.120.0000	● 121.06.220.0000
20	● 121.07.110.0000	● 121.07.210.0000	○ 121.07.120.0000	○ 121.07.220.0000
25	● 121.08.110.0000	● 121.08.210.0000	● 121.08.120.0000	● 121.08.220.0000
32	● 121.09.110.0000	● 121.09.210.0000	● 121.09.120.0000	● 121.09.220.0000
40	● 121.10.110.0000	● 121.10.210.0000	● 121.10.120.0000	● 121.10.220.0000
50	● 121.11.110.0000	● 121.11.210.0000	● 121.11.120.0000	● 121.11.220.0000
65	● 121.12.110.0000	● 121.12.210.0000	● 121.12.120.0000	● 121.12.220.0000
80	● 121.14.110.0000	● 121.14.210.0000	● 121.14.120.0000	● 121.14.220.0000
100	● 121.15.110.0000	● 121.15.210.0000	● 121.15.120.0000	● 121.15.220.0000
125	○ 121.16.110.0000	○ 121.16.210.0000	○ 121.16.120.0000	○ 121.16.220.0000
150	○ 121.17.110.0000	○ 121.17.210.0000	○ 121.17.120.0000	○ 121.17.220.0000

t-pieces, short, DIN 11852 (for tubing acc. DIN 11850 line 2) (511IN)

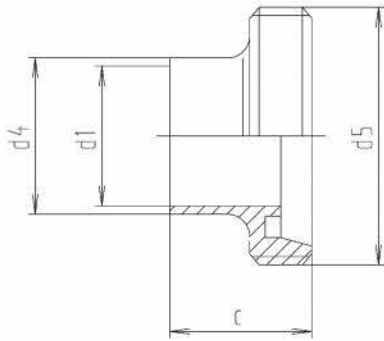
DN	304 L polished Ident number	304 L matt Ident number	316 L polished Ident number	316 L matt Ident number
10	○ 122.04.110.0000	○ 122.04.210.0000	○ 122.04.120.0000	○ 122.04.220.0000
15	○ 122.06.110.0000	○ 122.06.210.0000	○ 122.06.120.0000	○ 122.06.220.0000
20	● 122.07.110.0000	● 122.07.210.0000	● 122.07.120.0000	● 122.07.220.0000
25	● 122.08.110.0000	● 122.08.210.0000	● 122.08.120.0000	● 122.08.220.0000
32	○ 122.09.110.0000	○ 122.09.210.0000	○ 122.09.120.0000	○ 122.09.220.0000
40	● 122.10.110.0000	● 122.10.210.0000	● 122.10.120.0000	● 122.10.220.0000
50	● 122.11.110.0000	● 122.11.210.0000	● 122.11.120.0000	● 122.11.220.0000
65	● 122.12.110.0000	● 122.12.210.0000	● 122.12.120.0000	● 122.12.220.0000
80	● 122.14.110.0000	● 122.14.210.0000	● 122.14.120.0000	● 122.14.220.0000
100	● 122.15.110.0000	● 122.15.210.0000	● 122.15.120.0000	● 122.15.220.0000
125	○ 122.16.110.0000	○ 122.16.210.0000	○ 122.16.120.0000	○ 122.16.220.0000
150	○ 122.17.110.0000	○ 122.17.210.0000	○ 122.17.120.0000	○ 122.17.220.0000

t-pieces, short, DIN 11852 (for tubing acc. DIN 11850 line 2) (511IN)

DN	304 L polished Ident number	304 L matt Ident number	316 L polished Ident number	316 L matt Ident number
1"	● 127.08.11N.0006	● 127.08.21N.0006	● 127.08.12N.0006	● 127.08.22N.0006
1¼"	● 127.09.11N.0006	○ 127.09.21N.0006	● 127.09.12N.0006	● 127.09.22N.0006
1½"	● 127.10.11N.0006	● 127.10.21N.0006	● 127.10.12N.0006	● 127.10.22N.0006
2"	● 127.11.11N.0006	● 127.11.21N.0006	● 127.11.12N.0006	● 127.11.22N.0006
2½"	● 127.12.11N.0006	● 127.12.21N.0006	● 127.12.12N.0006	● 127.12.22N.0006
3"	● 127.13.11N.0006	○ 127.13.21N.0006	● 127.13.12N.0006	● 127.13.22N.0006
4"	○ 127.15.11N.0006	○ 127.15.21N.0006	● 127.15.12N.0006	● 127.15.22N.0006

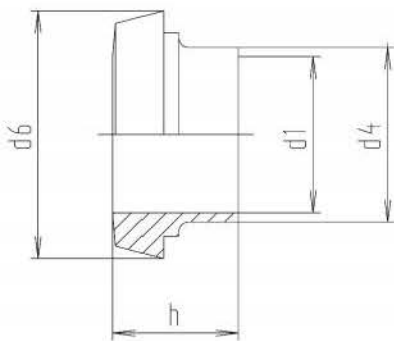
standard gasket NBR considered

male part DIN 11851-SC inch



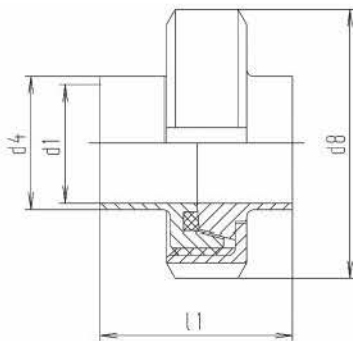
DN	c	d1	d4	d5	weight (kg)
1"	29	22.1	25.4	52x1/6"	0,140
1¼"	32	28.5	31.8	58x1/6"	0,170
1½"	33	34.8	38.1	65x1/6"	0,210
2"	35	47.5	50.8	78x1/6"	0,280
2½"	40	60.2	63.5	95x1/6"	0,470
3"	40	72.9	76.2	104x1/6"	0,510
4"	54	97.4	101.6	130x1/4"	1,020

welding liner sim. DIN 11851-SD inch (214Z)



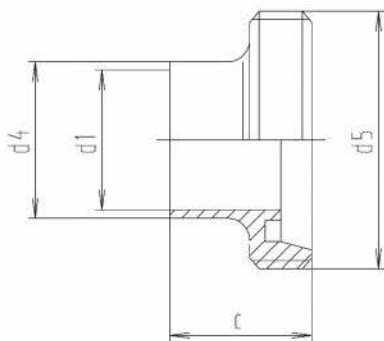
DN	d1	d4	d6	h	weight (kg)
1"	22.1	25.4	44	22	0,100
1¼"	28.5	31.8	50	25	0,120
1½"	34.8	38.1	56	26	0,150
2"	47.5	50.8	68.5	28	0,210
2½"	60.2	63.5	86	32	0,370
3"	72.9	76.2	93	32	0,340
4"	97.4	101.6	121	44	0,820

welding union similar to DIN 11851-S, inch (212Z)



DN	d1	d4	d8	l	weight (kg)
1"	22.1	25.4	63	45	0,420
1¼"	28.5	31.8	70	51	0,510
1½"	34.8	38.1	78	53	0,610
2"	47.5	50.8	92	57	0,830
2½"	60.2	63.5	112	65	1,390
3"	72.9	76.2	119	75	1,500
4"	97.4	101.6	148	89	2,920

male part DIN 11851-SC inch



DN	c	d1	d4	d5	weight (kg)
1"	29	22.1	25.4	52x1/6"	0,140
1¼"	32	28.5	31.8	58x1/6"	0,170
1½"	33	34.8	38.1	65x1/6"	0,210
2"	35	47.5	50.8	78x1/6"	0,280
2½"	40	60.2	63.5	95x1/6"	0,470
3"	40	72.9	76.2	104x1/6"	0,510
4"	54	97.4	101.6	130x1/4"	1,020

t-pieces, short, DIN 11852 (for tubing acc. DIN 11850 line 2) (5111N)

DN	304 L polished Ident number	304 L matt Ident number	316 L polished Ident number	316 L matt Ident number
1"	● 121.08.110.0006	● 121.08.210.0006	● 121.08.120.0006	● 121.08.220.0006
1¼"	● 121.09.110.0006	● 121.09.210.0006	● 121.09.120.0006	● 121.09.220.0006
1½"	● 121.10.110.0006	● 121.10.210.0006	● 121.10.120.0006	● 121.10.220.0006
2"	● 121.11.110.0006	● 121.11.210.0006	● 121.11.120.0006	● 121.11.220.0006
2½"	● 121.12.110.0006	● 121.12.210.0006	● 121.12.120.0006	● 121.12.220.0006
3"	● 121.13.110.0006	● 121.13.210.0006	● 121.13.120.0006	● 121.13.220.0006
4"	● 121.15.110.0006	● 121.15.210.0006	● 121.15.120.0006	● 121.15.220.0006

DN	304 L polished Ident number	304 L matt Ident number	316 L polished Ident number	316 L matt Ident number
1"	● 122.08.110.0006	● 122.08.210.0006	● 122.08.120.0006	● 122.08.220.0006
1¼"	● 122.09.110.0006	● 122.09.210.0006	● 122.09.120.0006	● 122.09.220.0006
1½"	● 122.10.110.0006	● 122.10.210.0006	● 122.10.120.0006	● 122.10.220.0006
2"	● 122.11.110.0006	● 122.11.210.0006	● 122.11.120.0006	● 122.11.220.0006
2½"	● 122.12.110.0006	● 122.12.210.0006	● 122.12.120.0006	● 122.12.220.0006
3"	● 122.13.110.0006	● 122.13.210.0006	● 122.13.120.0006	● 122.13.220.0006
4"	● 122.15.110.0006	○ 122.15.210.0006	● 122.15.120.0006	● 122.15.220.0006

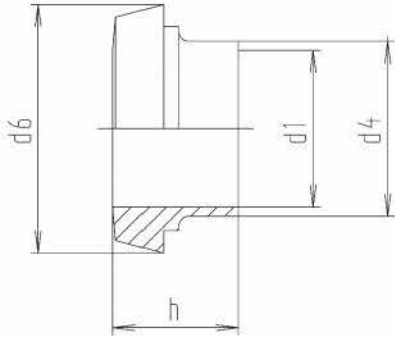
DN	316 L polished Ident number	316 L matt Ident number
1"	○ 127.08.12N.0306	○ 127.08.22N.0306
1¼"	○ 127.09.12N.0306	○ 127.09.22N.0306
1½"	○ 127.10.12N.0306	○ 127.10.22N.0306
2"	○ 127.11.12N.0306	○ 127.11.22N.0306
2½"	○ 127.12.12N.0306	○ 127.12.22N.0306
3"	○ 127.13.12N.0306	○ 127.13.22N.0306
4"	○ 127.15.12N.0306	○ 127.15.22N.0306

standard gasket NBR considered

DN	316 L polished Ident number	316 L matt Ident number
1"	○ 121.08.120.0306	○ 121.08.220.0306
1¼"	○ 121.09.120.0306	○ 121.09.220.0306
1½"	○ 121.10.120.0306	○ 121.10.220.0306
2"	○ 121.11.120.0306	○ 121.11.220.0306
2½"	○ 121.12.120.0306	○ 121.12.220.0306
3"	○ 121.13.120.0306	○ 121.13.220.0306
4"	○ 121.15.120.0306	○ 121.15.220.0306

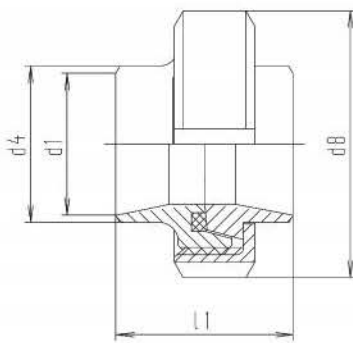
welding liner sim. DIN 11851-SD inch (214Z)

nocapius



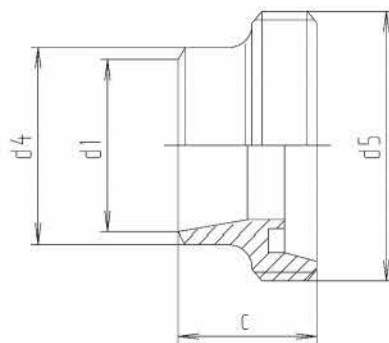
DN	d1	d4	d6	h	weight (kg)
1"	22.1	25.4	44	22	0,100
1¼"	28.5	31.8	50	25	0,120
1½"	34.8	38.1	56	26	0,150
2"	47.5	50.8	68.5	28	0,210
2½"	60.2	63.5	86	32	0,370
3"	72.9	76.2	93	32	0,340
4"	97.4	101.6	121	44	0,820

welding union similar to DIN 11851-S, ISO (212I)



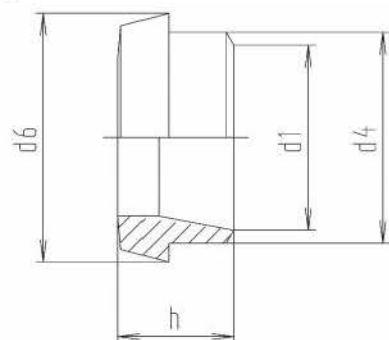
DN	d1	d4	d8	l1	weight (kg)
10	14	17.2	38	34	0,110
15	18.1	21.3	44	34	0,140
20	23.7	26.9	54	36	0,250
25	29.7	33.7	63	45	0,360
32	38.4	42.4	70	51	0,470
40	44.3	48.3	78	53	0,570
50	56.3	60.3	92	57	0,780
65	72.1	76.1	112	65	1,210
80	84.3	88.9	127	75	1,720
100	109.7	114.3	148	89	2,560
125	134.5	139.7	178	70	3,340
150	163.1	168.3	210	76	4,680

male part DIN 11851-SC ISO



DN	c	d1	d4	d5	weight (kg)
10	21	14	17.2	28x1/8"	0,030
15	21	18.1	21.3	34x1/8"	0,040
20	24	23.7	26.9	44x1/6"	0,080
25	29	29.7	33.7	52x1/6"	0,110
32	32	38.4	42.4	58x1/6"	0,140
40	33	44.3	48.3	65x1/6"	0,190
50	35	56.3	60.3	78x1/6"	0,250
65	40	72.1	76.1	95x1/6"	0,370
80	45	84.3	88.9	110x1/4"	0,560
100	54	109.7	114.3	130x1/4"	0,810
125	46	134.5	139.7	160x1/4"	1,130
150	50	163.1	168.3	190x1/4"	1,770

welding liner sim. DIN 11851-SD ISO (214I)



DN	d1	d4	d6	h	weight (kg)
10	14	17.2	22.5	17	0,010
15	18.1	21.3	28.5	17	0,020
20	23.7	26.9	36.5	18	0,040
25	29.7	33.7	44	22	0,070
32	38.4	42.4	50	25	0,110
40	44.3	48.3	56	26	0,130
50	56.3	60.3	68.5	28	0,190
65	72.1	76.1	86	32	0,290
80	84.3	88.9	100	37	0,360
100	109.7	114.3	121	44	0,670
125	134.5	139.7	150	34	0,760
150	163.1	168.3	176	37	1,030

t-pieces, short, DIN 11852 (for tubing acc. DIN 11850 line 2) (5111N)

DN	316 L polished Ident number	316 L matt Ident number
1"	○ 122.08.120.0306	○ 122.08.220.0306
1¼"	○ 122.09.120.0306	○ 122.09.220.0306
1½"	○ 122.10.120.0306	○ 122.10.220.0306
2"	○ 122.11.120.0306	○ 122.11.220.0306
2½"	○ 122.12.120.0306	○ 122.12.220.0306
3"	○ 122.13.120.0306	○ 122.13.220.0306
4"	○ 122.15.120.0306	○ 122.15.220.0306

t-pieces, short, DIN 11852 (for tubing acc. DIN 11850 line 2) (5111N)

DN	304 L polished Ident number	304 L matt Ident number	316 L polished Ident number	316 L matt Ident number
10	○ 127.04.11N.0037	○ 127.04.21N.0037	○ 127.04.12N.0037	○ 127.04.22N.0037
15	○ 127.06.11N.0037	○ 127.06.21N.0037	○ 127.06.12N.0037	○ 127.06.22N.0037
20	○ 127.07.11N.0037	○ 127.07.21N.0037	● 127.07.12N.0037	○ 127.07.22N.0037
25	● 127.08.11N.0037	○ 127.08.21N.0037	○ 127.08.12N.0037	○ 127.08.22N.0037
32	● 127.09.11N.0037	● 127.09.21N.0037	○ 127.09.12N.0037	○ 127.09.22N.0037
40	● 127.10.11N.0037	● 127.10.21N.0037	● 127.10.12N.0037	● 127.10.22N.0037
50	● 127.11.11N.0037	● 127.11.21N.0037	● 127.11.12N.0037	● 127.11.22N.0037
65	● 127.12.11N.0037	● 127.12.21N.0037	○ 127.12.12N.0037	○ 127.12.22N.0037
80	● 127.14.11N.0037	● 127.14.21N.0037	○ 127.14.12N.0037	○ 127.14.22N.0037
100	○ 127.15.11N.0037	○ 127.15.21N.0037	○ 127.15.12N.0037	○ 127.15.22N.0037
125	○ 127.16.11N.0037	○ 127.16.21N.0037	○ 127.16.12N.0037	○ 127.16.22N.0037
150	○ 127.17.11N.0037	○ 127.17.21N.0037	○ 127.17.12N.0037	○ 127.17.22N.0037

standard gasket NBR considered

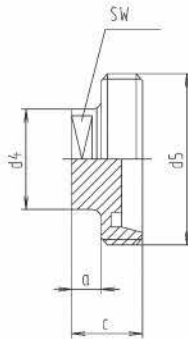
t-pieces, short, DIN 11852 (for tubing acc. DIN 11850 line 2) (5111N)

DN	304 L polished Ident number	304 L matt Ident number	316 L polished Ident number	316 L matt Ident number
10	● 121.04.110.0037	● 121.04.210.0037	● 121.04.120.0037	○ 121.04.220.0037
15	● 121.06.110.0037	○ 121.06.210.0037	● 121.06.120.0037	● 121.06.220.0037
20	● 121.07.110.0037	○ 121.07.210.0037	● 121.07.120.0037	● 121.07.220.0037
25	● 121.08.110.0037	● 121.08.210.0037	● 121.08.120.0037	● 121.08.220.0037
32	● 121.09.110.0037	● 121.09.210.0037	● 121.09.120.0037	○ 121.09.220.0037
40	● 121.10.110.0037	● 121.10.210.0037	● 121.10.120.0037	● 121.10.220.0037
50	● 121.11.110.0037	● 121.11.210.0037	● 121.11.120.0037	● 121.11.220.0037
65	● 121.12.110.0037	● 121.12.210.0037	● 121.12.120.0037	○ 121.12.220.0037
80	● 121.14.110.0037	● 121.14.210.0037	● 121.14.120.0037	● 121.14.220.0037
100	○ 121.15.110.0037	● 121.15.210.0037	● 121.15.120.0037	● 121.15.220.0037
125	● 121.16.110.0037	○ 121.16.210.0037	● 121.16.120.0037	● 121.16.220.0037
150	● 121.17.110.0037	● 121.17.210.0037	● 121.17.120.0037	● 121.17.220.0037

t-pieces, short, DIN 11852 (for tubing acc. DIN 11850 line 2) (5111N)

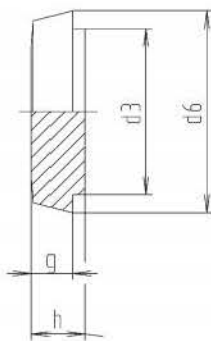
DN	304 L polished Ident number	304 L matt Ident number	316 L polished Ident number	316 L matt Ident number
10	○ 122.04.110.0037	○ 122.04.210.0037	● 122.04.120.0037	● 122.04.220.0037
15	○ 122.06.110.0037	○ 122.06.210.0037	○ 122.06.120.0037	○ 122.06.220.0037
20	○ 122.07.110.0037	○ 122.07.210.0037	○ 122.07.120.0037	● 122.07.220.0037
25	● 122.08.110.0037	● 122.08.210.0037	○ 122.08.120.0037	○ 122.08.220.0037
32	● 122.09.110.0037	● 122.09.210.0037	● 122.09.120.0037	○ 122.09.220.0037
40	● 122.10.110.0037	● 122.10.210.0037	● 122.10.120.0037	● 122.10.220.0037
50	● 122.11.110.0037	● 122.11.210.0037	● 122.11.120.0037	● 122.11.220.0037
65	● 122.12.110.0037	● 122.12.210.0037	○ 122.12.120.0037	● 122.12.220.0037
80	● 122.14.110.0037	● 122.14.210.0037	● 122.14.120.0037	● 122.14.220.0037
100	● 122.15.110.0037	● 122.15.210.0037	● 122.15.120.0037	● 122.15.220.0037
125	○ 122.16.110.0037	○ 122.16.210.0037	● 122.16.120.0037	○ 122.16.220.0037
150	○ 122.17.110.0037	○ 122.17.210.0037	● 122.17.120.0037	○ 122.17.220.0037

male blind, DIN 11851 (217)



DN	a	c	d4	d5	SW	weight (kg)
10	10	22	22	28x1/8"	19	0,060
15	10	22	25	34x1/8"	22	0,090
20	10	24	25	44x1/6"	22	0,130
25	10	24	34	52x1/6"	27	0,190
32	10	24	34	58x1/6"	27	0,220
40	10	24	34	65x1/6"	27	0,250
50	10	24	34	78x1/6"	27	0,350
65	10	26	34	95x1/6"	27	0,640
80	10	30	34	110x1/4"	27	1,300
100	10	30	34	130x1/4"	27	2,100

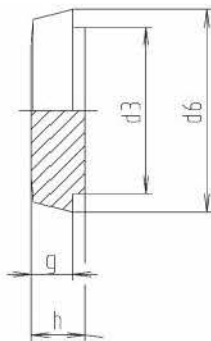
liner din, blank, heavy type (218)



DN	d3	d6	g	h	weight (kg)
10	18	22.5	6	9	0,022
15	24	28.5	6	9	0,040
20	30	36.5	8	11	0,072
25	35	44	10	13	0,130
32	41	50	10	13	0,170
40	48	56	10	13	0,220
50	61	68.5	11	14	0,350
65	79	86	12	16	0,670
75/3"	86	93	12	16	0,770
80	93	100	12	16	0,920
100	114	121	15	20	1,340
125	137	150	17	22	2,800
150	163	176	18	24	4,300

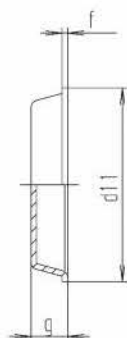
liner din, blank, heavy type (218)

nocapius



DN	d3	d6	g	h	weight (kg)
10	18	22.5	6	9	0,022
15	24	28.5	6	9	0,040
20	30	36.5	8	11	0,072
25	35	44	10	13	0,130
32	41	50	10	13	0,170
40	48	56	10	13	0,220
50	61	68.5	11	14	0,350
65	79	86	12	16	0,670
75/3"	86	93	12	16	0,770
80	93	100	12	16	0,920
100	114	121	15	20	1,340
125	137	150	17	22	2,800
150	163	176	18	24	4,300

liner din, blank, sheet metal type (218A)



DN	d11	f	g	weight (kg)
25	47	1.5	10	0,030
32	53	1.5	10	0,040
40	61	1.5	10	0,050
50	73	1.5	11	0,060
65	90	1.5	12	0,100
75/3"	99	1.5	12	0,110
80	103	1.5	12	0,120
100	123	1.5	15	0,170
125	153	2	17	0,350
150	183	2	18	0,493

t-pieces, short, DIN 11852 (for tubing acc. DIN 11850 line 2) (511IN)

DN	304 L polished Ident number	316 L polished Ident number
10	○ 121.04.110.0008	○ 121.04.120.0008
15	○ 121.06.110.0008	○ 121.06.120.0008
20	● 121.07.110.0008	○ 121.07.120.0008
25	● 121.08.110.0008	● 121.08.120.0008
32	● 121.09.110.0008	● 121.09.120.0008
40	● 121.10.110.0008	● 121.10.120.0008
50	● 121.11.110.0008	● 121.11.120.0008
65	● 121.12.110.0008	● 121.12.120.0008
80	● 121.14.110.0008	○ 121.14.120.0008
100	● 121.15.110.0008	○ 121.15.120.0008

matt finish on demand

t-pieces, short, DIN 11852 (for tubing acc. DIN 11850 line 2) (511IN)

DN	304 L polished Ident number	304 L matt Ident number	316 L polished Ident number	316 L matt Ident number
10	● 122.04.110.0008	● 122.04.210.0008	● 122.04.120.0008	● 122.04.220.0008
15	● 122.06.110.0008	● 122.06.210.0008	● 122.06.120.0008	● 122.06.220.0008
20	● 122.07.110.0008	● 122.07.210.0008	● 122.07.120.0008	● 122.07.220.0008
25	● 122.08.110.0008	● 122.08.210.0008	● 122.08.120.0008	● 122.08.220.0008
32	● 122.09.110.0008	● 122.09.210.0008	● 122.09.120.0008	● 122.09.220.0008
40	● 122.10.110.0008	● 122.10.210.0008	● 122.10.120.0008	● 122.10.220.0008
50	● 122.11.110.0008	● 122.11.210.0008	● 122.11.120.0008	● 122.11.220.0008
65	● 122.12.110.0008	● 122.12.210.0008	● 122.12.120.0008	● 122.12.220.0008
75/3*	● 122.13.110.0008	● 122.13.210.0008	● 122.13.120.0008	● 122.13.220.0008
80	● 122.14.110.0008	● 122.14.210.0008	● 122.14.120.0008	● 122.14.220.0008
100	● 122.15.110.0008	● 122.15.210.0008	● 122.15.120.0008	● 122.15.220.0008
125	● 122.16.110.0008	● 122.16.210.0008	● 122.16.120.0008	● 122.16.220.0008
150	● 122.17.110.0008	● 122.17.210.0008	● 122.17.120.0008	● 122.17.220.0008

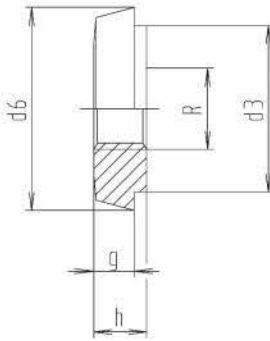
t-pieces, short, DIN 11852 (for tubing acc. DIN 11850 line 2) (511IN)

DN	316 L polished Ident number	316 L matt Ident number
10	○ 122.04.120.0308	○ 122.04.220.0308
15	○ 122.06.120.0308	○ 122.06.220.0308
20	○ 122.07.120.0308	○ 122.07.220.0308
25	○ 122.08.120.0308	○ 122.08.220.0308
32	○ 122.09.120.0308	○ 122.09.220.0308
40	○ 122.10.120.0308	○ 122.10.220.0308
50	○ 122.11.120.0308	○ 122.11.220.0308
65	○ 122.12.120.0308	○ 122.12.220.0308
75/3*	○ 122.13.120.0308	○ 122.13.220.0308
80	○ 122.14.120.0308	○ 122.14.220.0308
100	○ 122.15.120.0308	○ 122.15.220.0308
125	○ 122.16.120.0308	○ 122.16.220.0308
150	○ 122.17.120.0308	○ 122.17.220.0308

t-pieces, short, DIN 11852 (for tubing acc. DIN 11850 line 2) (511IN)

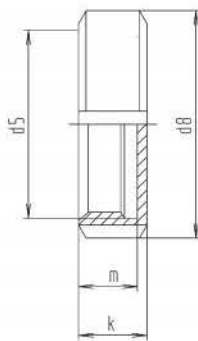
DN	304 polished Ident number	304 matt Ident number	316 L polished Ident number	316 L matt Ident number
25	● 122.08.110.0009	● 122.08.210.0009	● 122.08.120.0009	● 122.08.220.0009
32	● 122.09.110.0009	● 122.09.210.0009	● 122.09.120.0009	● 122.09.220.0009
40	● 122.10.110.0009	● 122.10.210.0009	● 122.10.120.0009	● 122.10.220.0009
50	● 122.11.110.0009	● 122.11.210.0009	● 122.11.120.0009	● 122.11.220.0009
65	● 122.12.110.0009	● 122.12.210.0009	● 122.12.120.0009	● 122.12.220.0009
75/3*	○ 122.13.110.0009	○ 122.13.210.0009	● 122.13.120.0009	○ 122.13.220.0009
80	● 122.14.110.0009	● 122.14.210.0009	○ 122.14.120.0009	○ 122.14.220.0009
100	● 122.15.110.0009	● 122.15.210.0009	● 122.15.120.0009	● 122.15.220.0009
125	● 122.16.110.0009	● 122.16.210.0009	● 122.16.120.0009	● 122.16.220.0009
150	● 122.17.110.0009	● 122.17.210.0009	● 122.17.120.0009	● 122.17.220.0009

liner din, blank, heavy, w. centered R-thread (219)



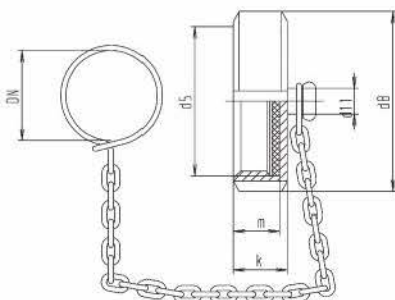
DN	d3	d6	g	h	Rmax	weight (kg)
10	18	22.5	6	9	1/8"	0,020
15	24	28.5	6	9	1/4"	0,040
20	30	36.5	8	11	3/8"	0,070
25	35	44	10	13	1/2"	0,130
32	41	50	10	13	3/4"	0,170
40	48	56	10	13	1"	0,220
50	61	68.5	11	14	1 1/2"	0,350
65	79	86	12	16	2"	0,670
75/3"	86	93	12	16	2"	0,770
80	93	100	12	16	2 1/2"	0,920
100	114	121	15	20	3"	1,340
125	137	150	17	22	3"	1,680
150	163	176	18	24	3"	4,300

blind nut, flat gasket, DIN 11851(220)



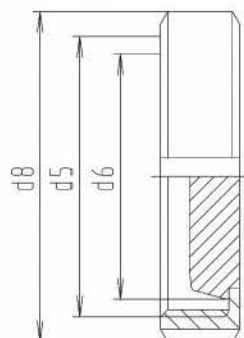
DN	d5	d8	k	m	weight (kg)
10	28x1/8"	38	18	15	0,080
15	34x1/8"	44	18	15	0,100
20	44x1/6"	54	20	17	0,140
25	52x1/6"	63	21	18	0,195
32	58x1/6"	70	21	18	0,230
40	65x1/6"	78	21	18	0,260
50	78x1/6"	92	22	19	0,380
65	95x1/6"	112	25	21	0,660
75/3"	104x1/6"	119	25	21	0,690
80	110x1/4"	127	30	26	1,000
100	130x1/4"	148	31	26	1,400
125	160x1/4"	178	34	29	1,970
150	190x1/4"	210	39	33	2,870

blind nut, with knob, chain and gasket disk, DIN 11851(221K)



DN	d5	d8	d11	k	m	weight (kg)
10	28x1/8"	38	10	18	15	0,120
15	34x1/8"	44	10	18	15	0,150
20	44x1/6"	54	10	20	17	0,190
25	52x1/6"	63	10	21	18	0,250
32	58x1/6"	70	10	21	18	0,290
40	65x1/6"	78	10	21	18	0,330
50	78x1/6"	92	10	22	19	0,460
65	95x1/6"	112	10	25	21	0,850
75/3"	104x1/6"	119	10	25	21	0,900
80	110x1/4"	127	10	30	26	1,110
100	130x1/4"	148	10	31	26	1,530
125	160x1/4"	178	10	34	29	2,120
150	190x1/4"	210	10	39	33	3,050

blind nut, female type, DIN 11851 gasket



DN	d5	d6	d8	weight (kg)
25	52x1/6"	44	63	0,325
32	58x1/6"	50	70	0,405
40	65x1/6"	56	78	0,485
50	78x1/6"	68.5	92	0,710
65	95x1/6"	86	112	1,240
75/3"	104x1/6"	93	119	1,350
80	110x1/4"	100	127	1,745
100	130x1/4"	121	148	2,425

t-pieces, short, DIN 11852 (for tubing acc. DIN 11850 line 2) (511IN)
 t-pieces, short, DIN 11852 (for tubing acc. DIN 11850 line 2) (511IN)
 t-pieces, short, DIN 11852 (for tubing acc. DIN 11850 line 2) (511IN)
 t-pieces, short, DIN 11852 (for tubing acc. DIN 11850 line 2) (511IN)

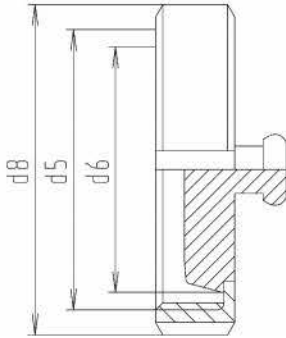
DN	304 L polished Ident number	304 L matt Ident number	316 L polished Ident number	316 L matt Ident number
10	○ 122.04.110.0010	○ 122.04.210.0010	○ 122.04.120.0010	○ 122.04.220.0010
15	○ 122.06.110.0010	○ 122.06.210.0010	○ 122.06.120.0010	○ 122.06.220.0010
20	○ 122.07.110.0010	○ 122.07.210.0010	○ 122.07.120.0010	○ 122.07.220.0010
25	○ 122.25.110.0010	○ 122.25.210.0010	○ 122.25.120.0010	○ 122.25.220.0010
32	○ 122.29.110.0010	○ 122.29.210.0010	○ 122.29.120.0010	○ 122.29.220.0010
40	○ 122.34.110.0010	○ 122.34.210.0010	○ 122.34.120.0010	○ 122.34.220.0010
50	○ 122.41.110.0010	○ 122.41.210.0010	○ 122.41.120.0010	○ 122.41.220.0010
65	○ 122.48.110.0010	○ 122.48.210.0010	○ 122.48.120.0010	○ 122.48.220.0010
75/3*	○ 122.55.110.0010	○ 122.55.210.0010	○ 122.55.120.0010	○ 122.55.220.0010
80	○ 122.63.110.0010	○ 122.63.210.0010	○ 122.63.120.0010	○ 122.63.220.0010
100	○ 122.74.110.0010	○ 122.74.210.0010	○ 122.74.120.0010	○ 122.74.220.0010
125	○ 122.84.110.0010	○ 122.84.210.0010	○ 122.84.120.0010	○ 122.84.220.0010
150	○ 122.95.110.0010	○ 122.95.210.0010	○ 122.95.120.0010	○ 122.95.220.0010
andere Innengewindebohrungen auf Anfrage				

DN	304 L polished Ident number	304 L matt Ident number	316 L polished Ident number	316 L matt Ident number
10	● 124.04.110.0001	● 124.04.210.0001	● 124.04.120.0001	● 124.04.220.0001
15	● 124.06.110.0001	● 124.06.210.0001	● 124.06.120.0001	● 124.06.220.0001
20	● 124.07.110.0001	● 124.07.210.0001	● 124.07.120.0001	● 124.07.220.0001
25	● 124.08.110.0001	● 124.08.210.0001	● 124.08.120.0001	● 124.08.220.0001
32	● 124.09.110.0001	○ 124.09.210.0001	● 124.09.120.0001	● 124.09.220.0001
40	● 124.10.110.0001	● 124.10.210.0001	● 124.10.120.0001	● 124.10.220.0001
50	● 124.11.110.0001	● 124.11.210.0001	● 124.11.120.0001	● 124.11.220.0001
65	● 124.12.110.0001	● 124.12.210.0001	● 124.12.120.0001	● 124.12.220.0001
75/3*	● 124.13.110.0001	● 124.13.210.0001	○ 124.13.120.0001	○ 124.13.220.0001
80	● 124.14.110.0001	● 124.14.210.0001	● 124.14.120.0001	● 124.14.220.0001
100	● 124.15.110.0001	● 124.15.210.0001	● 124.15.120.0001	● 124.15.220.0001
125	● 124.16.110.0001	● 124.16.210.0001	○ 124.16.120.0001	○ 124.16.220.0001
150	● 124.17.110.0001	● 124.17.210.0001	○ 124.17.120.0001	○ 124.17.220.0001

DN	304 L polished Ident number	304 L matt Ident number	316 L polished Ident number	316 L matt Ident number
10	○ 124.04.11N.0032	○ 124.04.21N.0032	○ 124.04.12N.0032	○ 124.04.22N.0032
15	● 124.06.11N.0032	● 124.06.21N.0032	○ 124.06.12N.0032	○ 124.06.22N.0032
20	● 124.07.11N.0032	○ 124.07.21N.0032	● 124.07.12N.0032	● 124.07.22N.0032
25	● 124.08.11N.0032	● 124.08.21N.0032	● 124.08.12N.0032	● 124.08.22N.0032
32	● 124.09.11N.0032	● 124.09.21N.0032	○ 124.09.12N.0032	○ 124.09.22N.0032
40	● 124.10.11N.0032	● 124.10.21N.0032	● 124.10.12N.0032	● 124.10.22N.0032
50	● 124.11.11N.0032	● 124.11.21N.0032	● 124.11.12N.0032	● 124.11.22N.0032
65	● 124.12.11N.0032	● 124.12.21N.0032	● 124.12.12N.0032	● 124.12.22N.0032
75/3*	○ 124.13.11N.0032	○ 124.13.21N.0032	○ 124.13.12N.0032	○ 124.13.22N.0032
80	● 124.14.11N.0032	● 124.14.21N.0032	○ 124.14.12N.0032	○ 124.14.22N.0032
100	● 124.15.11N.0032	● 124.15.21N.0032	○ 124.15.12N.0032	○ 124.15.22N.0032
125	○ 124.16.11N.0032	○ 124.16.21N.0032	○ 124.16.12N.0032	○ 124.16.22N.0032
150	● 124.17.11N.0032	● 124.17.21N.0032	○ 124.17.12N.0032	○ 124.17.22N.0032
standard gasket NBR considered				

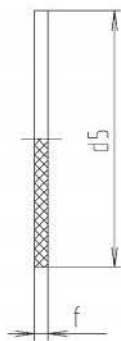
DN	304 L polished Ident number	316 L polished Ident number
25	○ 124.08.110.0056	○ 124.08.120.0056
32	○ 124.09.110.0056	○ 124.09.120.0056
40	○ 124.10.110.0056	○ 124.10.120.0056
50	○ 124.11.110.0056	○ 124.11.120.0056
65	○ 124.12.110.0056	○ 124.12.120.0056
75/3*	○ 124.13.110.0056	○ 124.13.120.0056
80	○ 124.14.110.0056	○ 124.14.120.0056
100	○ 124.15.110.0056	○ 124.15.120.0056
matt finish on demand		

blind nut, female type, w. knob, DIN 11851 gasket with knob



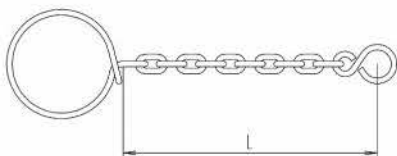
DN	d5	d6	d8	weight (kg)
25	52x1/6"	44	63	0,325
32	58x1/6"	50	70	0,405
40	65x1/6"	56	78	0,485
50	78x1/6"	68,5	92	0,710
65	95x1/6"	86	112	1,240
75/3"	104x1/6"	93	119	1,200
80	110x1/4"	100	127	1,745
100	130x1/4"	121	148	2,425

gasket disc for blind cap (222)



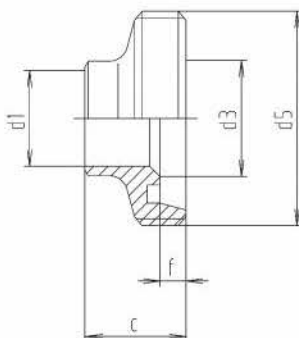
DN	d5	d5-PTFE	f	weight (kg)
10	28	27	3	0,002
15	34	33	3	0,003
20	44	43	3	0,006
25	52	51	3	0,008
32	58	57	3	0,010
40	65	64	3	0,013
50	78	77	3	0,020
65	95	94	3	0,029
75/3"	104	103	3	0,035
80	110	109	3	0,044
100	130	129	3	0,062
125	160	159	3	0,093
150	190	189	3	0,132

chain with hook and eye (223B)



DN	L	weight (kg)
10	85	0,030
15	85	0,030
20	85	0,030
25	120	0,030
32	140	0,030
40	150	0,040
50	140	0,040
65	150	0,050
80	190	0,050
100	195	0,060
125	285	0,070
150	305	0,080

reducing male DIN 11851, welding type



DN	c	d1	d3	d5	f	weight (kg)
25/15	27	16	26	52x1/6"	7	0,110
25/20	27	20	26	52x1/6"	7	0,120
32/25	27	26	32	58x1/6"	7	0,160
40/25	28	26	38	65x1/6"	7	0,220
40/32	29	32	38	65x1/6"	7	0,210
50/25	26	26	50	78x1/6"	7	0,320
50/40	35	38	50	78x1/6"	7	0,330
65/40	39	38	66	95x1/6"	8	0,500
65/50	40	50	66	95x1/6"	8	0,710
80/50	45	50	81	110x1/4"	8	0,920
80/65	46	66	81	110x1/4"	8	0,580
100/65	49	66	100	130x1/4"	10	1,110
100/80	49	81	100	130x1/4"	10	0,930

t-pieces, short, DIN 11852 (for tubing acc. DIN 11850 line 2) (511IN)

DN	304 L polished Ident number	316 L polished Ident number
25	○ 124.08.110.0026	○ 124.08.120.0026
32	○ 124.09.110.0026	○ 124.09.120.0026
40	○ 124.10.110.0026	○ 124.10.120.0026
50	○ 124.11.110.0026	○ 124.11.120.0026
65	○ 124.12.110.0026	○ 124.12.120.0026
75/3*	○ 124.13.110.0026	○ 124.13.120.0026
80	○ 124.14.110.0026	○ 124.14.120.0026
100	○ 124.15.110.0026	○ 124.15.120.0026

matt finish on demand

t-pieces, short, DIN 11852 (for tubing acc. DIN 11850 line 2) (511IN)

DN	EPDM Ident number	NBR Ident number	PTFE Ident number	FPM Ident number
10	● 823.04.6E0.0000	● 823.04.6N0.0000	○ 823.04.6T0.0000	● 823.04.6V0.0000
15	● 823.06.6E0.0000	● 823.06.6N0.0000	○ 823.06.6T0.0000	● 823.06.6V0.0000
20	● 823.07.6E0.0000	● 823.07.6N0.0000	○ 823.07.6T0.0000	● 823.07.6V0.0000
25	● 823.08.6E0.0000	● 823.08.6N0.0000	● 823.08.6T0.0000	● 823.08.6V0.0000
32	● 823.09.6E0.0000	● 823.09.6N0.0000	○ 823.09.6T0.0000	● 823.09.6V0.0000
40	● 823.10.6E0.0000	● 823.10.6N0.0000	● 823.10.6T0.0000	● 823.10.6V0.0000
50	● 823.11.6E0.0000	● 823.11.6N0.0000	● 823.11.6T0.0000	● 823.11.6V0.0000
65	● 823.12.6E0.0000	● 823.12.6N0.0000	○ 823.12.6T0.0000	● 823.12.6V0.0000
75/3*	● 823.13.6E0.0000	● 823.13.6N0.0000	○ 823.13.6T0.0000	● 823.13.6V0.0000
80	● 823.14.6E0.0000	● 823.14.6N0.0000	○ 823.14.6T0.0000	● 823.14.6V0.0000
100	● 823.15.6E0.0000	● 823.15.6N0.0000	○ 823.15.6T0.0000	○ 823.15.6V0.0000
125	● 823.16.6E0.0000	● 823.16.6N0.0000	○ 823.16.6T0.0000	● 823.16.6V0.0000
150	○ 823.17.6E0.0000	● 823.17.6N0.0000	○ 823.17.6T0.0000	○ 823.17.6V0.0000

t-pieces, short, DIN 11852 (for tubing acc. DIN 11850 line 2) (511IN)

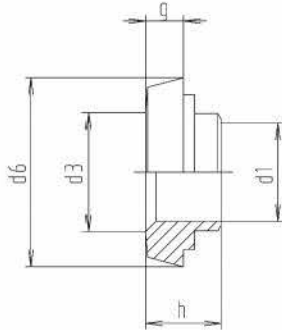
DN	304 polished Ident number
10	● 124.04.110.0004
15	● 124.06.110.0004
20	● 124.07.110.0004
25	● 124.08.110.0004
32	● 124.09.110.0004
40	● 124.10.110.0004
50	● 124.11.110.0004
65	● 124.12.110.0004
80	● 124.14.110.0004
100	● 124.15.110.0004
125	● 124.16.110.0004
150	● 124.17.110.0004

t-pieces, short, DIN 11852 (for tubing acc. DIN 11850 line 2) (511IN)

DN	304 L polished Ident number	304 L matt Ident number	316 L polished Ident number	316 L matt Ident number
25/15	○ 121.25.110.0012	○ 121.25.210.0012	○ 121.25.120.0012	○ 121.25.220.0012
25/20	● 121.26.110.0012	● 121.26.210.0012	○ 121.26.120.0012	○ 121.26.220.0012
32/25	● 121.30.110.0012	● 121.30.210.0012	○ 121.30.120.0012	○ 121.30.220.0012
40/25	○ 121.34.110.0012	● 121.34.210.0012	○ 121.34.120.0012	○ 121.34.220.0012
40/32	● 121.35.110.0012	● 121.35.210.0012	○ 121.35.120.0012	○ 121.35.220.0012
50/25	● 121.39.110.0012	● 121.39.210.0012	○ 121.39.120.0012	○ 121.39.220.0012
50/40	○ 121.41.110.0012	○ 121.41.210.0012	○ 121.41.120.0012	○ 121.41.220.0012
65/40	● 121.47.110.0012	● 121.47.210.0012	○ 121.47.120.0012	○ 121.47.220.0012
65/50	● 121.48.110.0012	● 121.48.210.0012	○ 121.48.120.0012	○ 121.48.220.0012
80/50	○ 121.63.110.0012	○ 121.63.210.0012	○ 121.63.120.0012	○ 121.63.220.0012
80/65	● 121.64.110.0012	● 121.64.210.0012	○ 121.64.120.0012	○ 121.64.220.0012
100/65	● 121.73.110.0012	● 121.73.210.0012	○ 121.73.120.0012	○ 121.73.220.0012
100/80	● 121.75.110.0012	● 121.75.210.0012	○ 121.75.120.0012	○ 121.75.220.0012

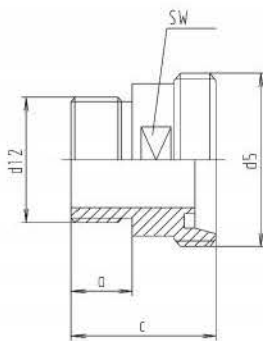
other reducers on demand

reducing liner DIN 11851, welding type (224A)



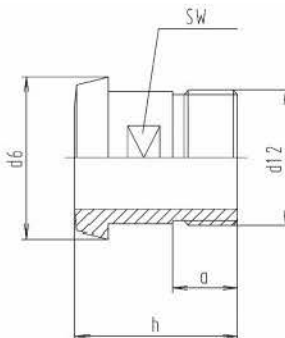
DN	d1	d3	d6	g	h	weight (kg)
25/15	16	26	44	10	22	0,110
25/20	20	26	44	10	22	0,120
32/25	26	32	50	10	20	0,140
40/25	26	38	56	10	20	0,170
40/32	32	38	56	10	23	0,180
50/25	26	50	68.5	11	28	0,310
50/40	38	50	68.5	11	26	0,270
65/40	38	66	86	12	26	0,540
65/50	50	66	86	12	27	0,450
80/50	50	81	100	12	30	0,660
80/65	66	81	100	12	31	0,500
100/65	66	100	121	15	40	1,170
100/80	81	100	121	15	42	1,060

R-male ref.din 11851, thread inside (228)



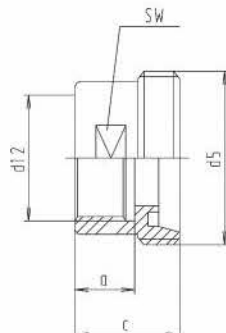
DN	a	c	d5	d12	SW	weight (kg)
10	14	40	28x1/8"	R3/8"	19	0,060
15	14	40	34x1/8"	R1/2"	24	0,080
20	14	42	44x1/6"	R3/4"	30	0,140
25	20	48	52x1/6"	R1"	41	0,280
32	20	48	58x1/6"	R1 1/4"	46	0,350
40	20	50	65x1/6"	R1 1/2"	50	0,400
50	20	52	78x1/6"	R2"	65	0,530
65	22	56	95x1/6"	R2 1/2"	80	0,720
80	25	66	110x1/4"	R3"	95	1,010
100	30	72	130x1/4"	R4"	117	1,540

R-liner ref. DIN 11851, thread inside (227)



DN	a	d6	d12	h	SW	weight (kg)
10	14	22.5	R3/8"	38	14	0,030
15	14	28.5	R1/2"	38	19	0,055
20	14	36.5	R3/4"	40	27	0,095
25	20	44	R1"	50	30	0,140
32	20	50	R1 1/4"	50	36	0,240
40	20	56	R1 1/2"	50	44	0,270
50	20	68.5	R2"	50	55	0,350
65	22	86	R2 1/2"	55	70	0,530
80	25	100	R3"	60	88	0,670
100	30	121	R4"	70	110	1,220

R-male ref.din 11851, thread outside (229)



DN	a	c	d5	d12	SW	weight (kg)
10	14	30	28x1/8"	R3/8"	19	0,060
15	14	30	34x1/8"	R1/2"	24	0,070
20	14	30	44x1/6"	R3/4"	30	0,110
25	20	35	52x1/6"	R1"	41	0,220
32	20	35	58x1/6"	R1 1/4"	46	0,230
40	20	35	65x1/6"	R1 1/2"	50	0,240
50	20	35	78x1/6"	R2"	65	0,370
65	22	38	95x1/6"	R2 1/2"	80	0,540
80	25	43	110x1/4"	R3"	95	0,720
100	30	50	130x1/4"	R4"	117	0,910

t-pieces, short, DIN 11852 (for tubing acc. DIN 11850 line 2) (5/11IN)

DN	304 L polished Ident number	304 L matt Ident number	316 L polished Ident number	316 L matt Ident number
25/15	● 122.25.110.0012	● 122.25.210.0012	○ 122.25.120.0012	○ 122.25.220.0012
25/20	● 122.26.110.0012	● 122.26.210.0012	○ 122.26.120.0012	○ 122.26.220.0012
32/25	● 122.30.110.0012	● 122.30.210.0012	● 122.30.120.0012	● 122.30.220.0012
40/25	● 122.34.110.0012	● 122.34.210.0012	● 122.34.120.0012	● 122.34.220.0012
40/32	● 122.35.110.0012	● 122.35.210.0012	● 122.35.120.0012	● 122.35.220.0012
50/25	● 122.39.110.0012	● 122.39.210.0012	● 122.39.120.0012	● 122.39.220.0012
50/40	● 122.41.110.0012	● 122.41.210.0012	● 122.41.120.0012	● 122.41.220.0012
65/40	● 122.47.110.0012	○ 122.47.210.0012	● 122.47.120.0012	● 122.47.220.0012
65/50	● 122.48.110.0012	● 122.48.210.0012	● 122.48.120.0012	● 122.48.220.0012
80/50	● 122.63.110.0012	○ 122.63.210.0012	● 122.63.120.0012	● 122.63.220.0012
80/65	● 122.64.110.0012	● 122.64.210.0012	● 122.64.120.0012	● 122.64.220.0012
100/65	● 122.73.110.0012	● 122.73.210.0012	○ 122.73.120.0012	○ 122.73.220.0012
100/80	● 122.75.110.0012	● 122.75.210.0012	● 122.75.120.0012	● 122.75.220.0012
other reducers on demand				

t-pieces, short, DIN 11852 (for tubing acc. DIN 11850 line 2) (5/11IN)

DN	304 L polished Ident number	304 L matt Ident number	316 L polished Ident number	316 L matt Ident number
10	● 121.04.110.0016	● 121.04.210.0016	● 121.04.120.0016	● 121.04.220.0016
15	● 121.06.110.0016	● 121.06.210.0016	● 121.06.120.0016	● 121.06.220.0016
20	● 121.07.110.0016	● 121.07.210.0016	● 121.07.120.0016	● 121.07.220.0016
25	● 121.08.110.0016	● 121.08.210.0016	● 121.08.120.0016	● 121.08.220.0016
32	● 121.09.110.0016	● 121.09.210.0016	● 121.09.120.0016	● 121.09.220.0016
40	● 121.10.110.0016	● 121.10.210.0016	● 121.10.120.0016	● 121.10.220.0016
50	● 121.11.110.0016	● 121.11.210.0016	● 121.11.120.0016	● 121.11.220.0016
65	○ 121.12.110.0016	○ 121.12.210.0016	● 121.12.120.0016	● 121.12.220.0016
80	○ 121.14.110.0016	○ 121.14.210.0016	○ 121.14.120.0016	○ 121.14.220.0016
100	○ 121.15.110.0016	○ 121.15.210.0016	○ 121.15.120.0016	○ 121.15.220.0016
other male tpyes on demand				

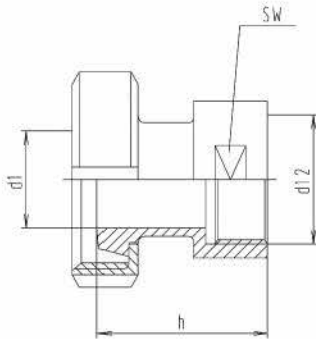
t-pieces, short, DIN 11852 (for tubing acc. DIN 11850 line 2) (5/11IN)

DN	304 L polished Ident number	304 L matt Ident number	316 L polished Ident number	316 L matt Ident number
10	● 122.04.110.0016	● 122.04.210.0016	● 122.04.120.0016	● 122.04.220.0016
15	● 122.06.110.0016	● 122.06.210.0016	● 122.06.120.0016	● 122.06.220.0016
20	● 122.07.110.0016	● 122.07.210.0016	● 122.07.120.0016	● 122.07.220.0016
25	● 122.08.110.0016	● 122.08.210.0016	● 122.08.120.0016	● 122.08.220.0016
32	● 122.09.110.0016	○ 122.09.210.0016	● 122.09.120.0016	● 122.09.220.0016
40	● 122.10.110.0016	● 122.10.210.0016	● 122.10.120.0016	● 122.10.220.0016
50	● 122.11.110.0016	● 122.11.210.0016	● 122.11.120.0016	● 122.11.220.0016
65	● 122.12.110.0016	● 122.12.210.0016	○ 122.12.120.0016	○ 122.12.220.0016
80	● 122.14.110.0016	● 122.14.210.0016	○ 122.14.120.0016	○ 122.14.220.0016
100	● 122.15.110.0016	● 122.15.210.0016	○ 122.15.120.0016	○ 122.15.220.0016
other male tpyes on demand				

t-pieces, short, DIN 11852 (for tubing acc. DIN 11850 line 2) (5/11IN)

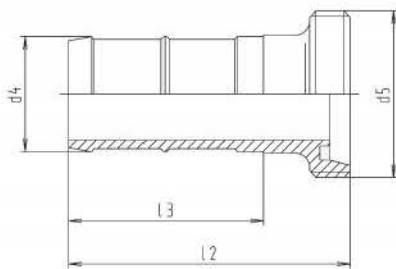
DN	304 L polished Ident number	304 L matt Ident number	316 L polished Ident number	316 L matt Ident number
10	● 121.04.110.0017	● 121.04.210.0017	● 121.04.120.0017	● 121.04.220.0017
15	● 121.06.110.0017	● 121.06.210.0017	● 121.06.120.0017	● 121.06.220.0017
20	● 121.07.110.0017	● 121.07.210.0017	● 121.07.120.0017	● 121.07.220.0017
25	● 121.08.110.0017	● 121.08.210.0017	● 121.08.120.0017	● 121.08.220.0017
32	● 121.09.110.0017	● 121.09.210.0017	● 121.09.120.0017	● 121.09.220.0017
40	○ 121.10.110.0017	○ 121.10.210.0017	● 121.10.120.0017	● 121.10.220.0017
50	● 121.11.110.0017	● 121.11.210.0017	● 121.11.120.0017	● 121.11.220.0017
65	● 121.12.110.0017	● 121.12.210.0017	○ 121.12.120.0017	○ 121.12.220.0017
80	● 121.14.110.0017	● 121.14.210.0017	○ 121.14.120.0017	○ 121.14.220.0017
100	● 121.15.110.0017	● 121.15.210.0017	○ 121.15.120.0017	○ 121.15.220.0017
other male tpyes on demand				

R-liner ref. DIN 11851, thread outside (230)



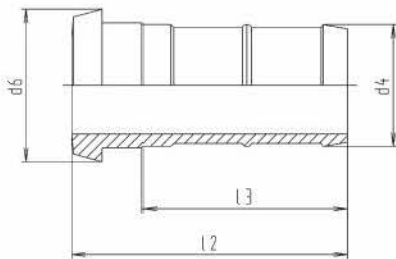
DN	d1	d12	h	SW	weight (kg)
10	10	R3/8"	39	19	0,150
15	16	R1/2"	41	24	0,200
20	20	R3/4"	42	30	0,290
25	26	R1"	52	41	0,540
32	32	R1 1/4"	55	46	0,565
40	38	R1 1/2"	56	50	0,590
50	50	R2"	58	65	0,860
65	66	R2 1/2"	64	80	1,360
80	81	R3"	74	95	1,610
100	100	R4"	89	117	2,340

male hose spout DIN 11851



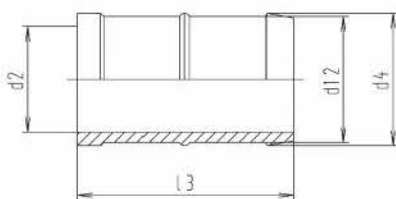
DN	d4	d5	l2	l3	Schl.LW	weight (kg)
10	15	28x1/8"	50	31	13	0,050
15	21	34x1/8"	64	47	19	0,080
20	26	44x1/6"	76	54	25	0,170
25	32	52x1/6"	87	64	30	0,230
32	40	58x1/6"	97	67	38	0,330
40	48	65x1/6"	112	81	45	0,520
50	58	78x1/6"	127	95	55	0,660
65	76	95x1/6"	148	112	73	1,140
80	90	110x1/4"	168	127	87	1,500
100	110	130x1/4"	190	146	107	2,400

liner w. hose nozzle DIN (232)



DN	d4	d6	l2	l3	Schl. LW	weight (kg)
10	15	22.5	50	31	13	0,045
15	21	28.5	60	40	19	0,060
20	26	36	70	54	25	0,130
25	32	44	80	64	30	0,190
32	40	50	90	67	38	0,270
40	48	56	105	81	45	0,420
50	58	68.5	120	95	55	0,580
65	76	86	140	112	73	1,080
80	90	100	160	127	87	1,320
100	110	121	180	146	107	2,130

hose nozzle, weld end, DIN (238)



DN	d2	d4	d12	l3	Schl. LW	weight (kg)
10	10	15	13	33	13	0,020
15	16	21	19	43	19	0,030
20	20	26	24	52	25	0,080
25	26	32	30	58	30	0,090
32	32	40	38	65	38	0,110
40	38	48	45	79	45	0,260
50	50	58	55	92	55	0,340
65	66	76	73	108	73	0,660
80	81	90	87	123	87	0,800
100	100	110	107	136	107	1,000

t-pieces, short, DIN 11852 (for tubing acc. DIN 11850 line 2) (5111N)

DN	304 L polished Ident number	304 L matt Ident number	316 L polished Ident number	316 L matt Ident number
10	○ 122.04.110.0017	○ 122.04.210.0017	○ 122.04.120.0017	○ 122.04.220.0017
15	● 122.06.110.0017	● 122.06.210.0017	● 122.06.120.0017	● 122.06.220.0017
20	● 122.07.110.0017	● 122.07.210.0017	● 122.07.120.0017	● 122.07.220.0017
25	● 122.08.110.0017	● 122.08.210.0017	● 122.08.120.0017	● 122.08.220.0017
32	● 122.09.110.0017	● 122.09.210.0017	● 122.09.120.0017	● 122.09.220.0017
40	● 122.10.110.0017	● 122.10.210.0017	● 122.10.120.0017	● 122.10.220.0017
50	● 122.11.110.0017	● 122.11.210.0017	● 122.11.120.0017	● 122.11.220.0017
65	● 122.12.110.0017	● 122.12.210.0017	○ 122.12.120.0017	○ 122.12.220.0017
80	● 122.14.110.0017	● 122.14.210.0017	○ 122.14.120.0017	○ 122.14.220.0017
100	● 122.15.110.0017	● 122.15.210.0017	○ 122.15.120.0017	○ 122.15.220.0017

other male types on demand

t-pieces, short, DIN 11852 (for tubing acc. DIN 11850 line 2) (5111N)

DN	304 L polished Ident number	316 L polished Ident number
10	○ 126.04.110.0001	○ 126.04.120.0001
15	○ 126.06.110.0001	● 126.06.120.0001
20	○ 126.07.110.0001	● 126.07.120.0001
25	● 126.08.110.0001	○ 126.08.120.0001
32	● 126.09.110.0001	○ 126.09.120.0001
40	● 126.10.110.0001	○ 126.10.120.0001
50	● 126.11.110.0001	○ 126.11.120.0001
65	● 126.12.110.0001	○ 126.12.120.0001
80	○ 126.14.110.0001	○ 126.14.120.0001
100	○ 126.15.110.0001	○ 126.15.120.0001

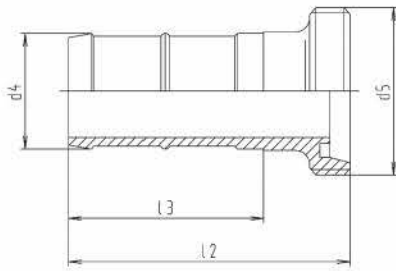
t-pieces, short, DIN 11852 (for tubing acc. DIN 11850 line 2) (5111N)

DN	304 L polished Ident number	316 L polished Ident number
10	● 126.04.110.0000	● 126.04.120.0000
15	● 126.06.110.0000	● 126.06.120.0000
20	● 126.07.110.0000	● 126.07.120.0000
25	● 126.08.110.0000	● 126.08.120.0000
32	● 126.09.110.0000	● 126.09.120.0000
40	● 126.10.110.0000	● 126.10.120.0000
50	● 126.11.110.0000	○ 126.11.120.0000
65	● 126.12.110.0000	○ 126.12.120.0000
80	● 126.14.110.0000	○ 126.14.120.0000
100	○ 126.15.110.0000	○ 126.15.120.0000

t-pieces, short, DIN 11852 (for tubing acc. DIN 11850 line 2) (5111N)

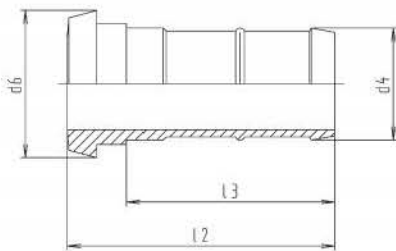
DN	304 polished Ident number	304 matt Ident number	316 L polished Ident number	316 L matt Ident number
10	○ 226.04.110.0006	○ 226.04.210.0006	○ 226.04.120.0006	○ 226.04.220.0006
15	● 226.06.110.0006	● 226.06.210.0006	● 226.06.120.0006	● 226.06.220.0006
20	● 226.07.110.0006	● 226.07.210.0006	● 226.07.120.0006	● 226.07.220.0006
25	● 226.08.110.0006	● 226.08.210.0006	● 226.08.120.0006	● 226.08.220.0006
32	● 226.09.110.0006	● 226.09.210.0006	● 226.09.120.0006	● 226.09.220.0006
40	● 226.10.110.0006	● 226.10.210.0006	● 226.10.120.0006	● 226.10.220.0006
50	● 226.11.110.0006	● 226.11.210.0006	● 226.11.120.0006	● 226.11.220.0006
65	○ 226.12.110.0006	○ 226.12.210.0006	● 226.12.120.0006	● 226.12.220.0006
80	○ 226.14.110.0006	○ 226.14.210.0006	○ 226.14.120.0006	○ 226.14.220.0006
100	○ 226.15.110.0006	○ 226.15.210.0006	○ 226.15.120.0006	○ 226.15.220.0006

male hose spout DIN 11851 - brewery type



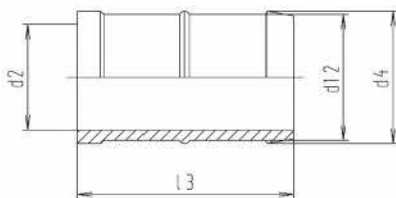
DN	d4	d5	l2	l3	Schl. LW	weight (kg)
25	30	52x1/6"	87	63	28	0,240
32	38	58x1/6"	97	70	35	0,330
40	43	65x1/6"	112	84	40	0,570
50	53	78x1/6"	127	97	50	0,650
65	68	95x1/6"	148	113	65	1,450
80	83	110x1/4"	172	132	80	1,500
100	103	130x1/4"	190	141	100	2,150

liner w. hose nozzle brewery type (236)



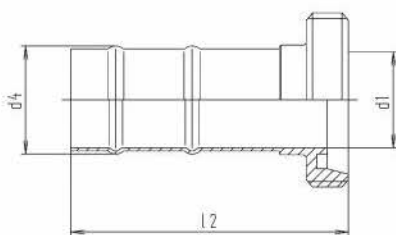
DN	d4	d6	l2	l3	Schl. LW	weight (kg)
25	30	44	80	63	28	0,180
32	38	50	90	70	35	0,300
40	43	56	105	84	40	0,510
50	53	68.5	120	97	50	0,560
65	68	86	140	113	65	1,000
80	83	100	164	132	80	1,300
100	103	121	180	141	100	2,050

hose nozzle, weld end, brewery type (238A)



DN	d2	d4	d12	l3	Schl. LW	weight (kg)
25	24	30	28	58	28	0,090
32	31	38	36	65	35	0,130
40	32	43	40	79	40	0,260
50	45	53	50	92	50	0,340
65	60	68	65	108	65	0,660
80	74	83	80	127	80	0,800
100	93	103	100	136	100	1,000

male hose spout DIN 11851 - light



DN	d1	d4	l2	weight (kg)
15	16	19.5	67	0,070
20	20	23.5	69	0,110
25	26	29.5	82	0,140
32	32	36	92	0,200
40	38	42	102	0,230
50	50	54	113	0,320
65	66	72	125	0,670
80	81	88	135	0,980
100	100	107	150	1,070

t-pieces, short, DIN 11852 (for tubing acc. DIN 11850 line 2) (5111N)

DN	304 L polished Ident number	304 L matt Ident number	316 L polished Ident number	316 L matt Ident number
25	● 126.08.110.0005	● 126.08.210.0005	○ 126.08.120.0005	○ 126.08.220.0005
32	● 126.09.110.0005	● 126.09.210.0005	○ 126.09.120.0005	○ 126.09.220.0005
40	● 126.10.110.0005	● 126.10.210.0005	○ 126.10.120.0005	○ 126.10.220.0005
50	● 126.11.110.0005	● 126.11.210.0005	○ 126.11.120.0005	○ 126.11.220.0005
65	● 126.12.110.0005	● 126.12.210.0005	○ 126.12.120.0005	○ 126.12.220.0005
80	○ 126.14.110.0005	○ 126.14.210.0005	○ 126.14.120.0005	○ 126.14.220.0005
100	○ 126.15.110.0005	○ 126.15.210.0005	○ 126.15.120.0005	○ 126.15.220.0005

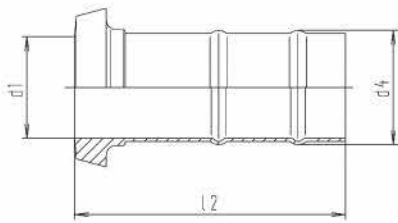
DN	304 L polished Ident number	304 L matt Ident number	316 L polished Ident number	316 L matt Ident number
25	● 126.08.110.0004	● 126.08.210.0004	○ 126.08.120.0004	○ 126.08.220.0004
32	● 126.09.110.0004	● 126.09.210.0004	○ 126.09.120.0004	○ 126.09.220.0004
40	● 126.10.110.0004	● 126.10.210.0004	○ 126.10.120.0004	○ 126.10.220.0004
50	● 126.11.110.0004	● 126.11.210.0004	○ 126.11.120.0004	○ 126.11.220.0004
65	● 126.12.110.0004	● 126.12.210.0004	○ 126.12.120.0004	○ 126.12.220.0004
80	● 126.14.110.0004	● 126.14.210.0004	○ 126.14.120.0004	○ 126.14.220.0004
100	● 126.15.110.0004	● 126.15.210.0004	○ 126.15.120.0004	○ 126.15.220.0004

DN	304 polished Ident number	304 matt Ident number	316 L polished Ident number	316 L matt Ident number
25	○ 226.08.110.0007	○ 226.08.210.0007	○ 226.08.120.0007	○ 226.08.220.0007
32	○ 226.09.110.0007	○ 226.09.210.0007	○ 226.09.120.0007	○ 226.09.220.0007
40	○ 226.10.110.0007	○ 226.10.210.0007	○ 226.10.120.0007	○ 226.10.220.0007
50	○ 226.11.110.0007	○ 226.11.210.0007	○ 226.11.120.0007	○ 226.11.220.0007
65	○ 226.12.110.0007	○ 226.12.210.0007	○ 226.12.120.0007	○ 226.12.220.0007
80	● 226.14.110.0007	○ 226.14.210.0007	○ 226.14.120.0007	○ 226.14.220.0007
100	○ 226.15.110.0007	○ 226.15.210.0007	○ 226.15.120.0007	○ 226.15.220.0007

DN	304 polished Ident number	316 L polished Ident number
15	● 126.06.110.0002	○ 126.06.120.0002
20	● 126.07.110.0002	○ 126.07.120.0002
25	○ 126.08.110.0002	○ 126.08.120.0002
32	● 126.09.110.0002	○ 126.09.120.0002
40	● 126.10.110.0002	○ 126.10.120.0002
50	● 126.11.110.0002	○ 126.11.120.0002
65	○ 126.12.110.0002	○ 126.12.120.0002
80	○ 126.14.110.0002	○ 126.14.120.0002
100	○ 126.15.110.0002	○ 126.15.120.0002

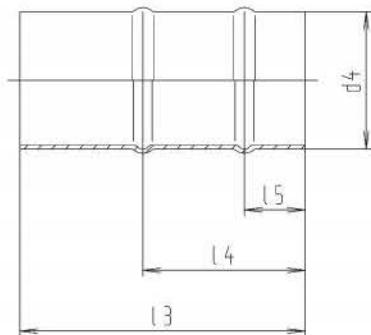
matt finish on demand

liner w. hose nozzle tube type (235)



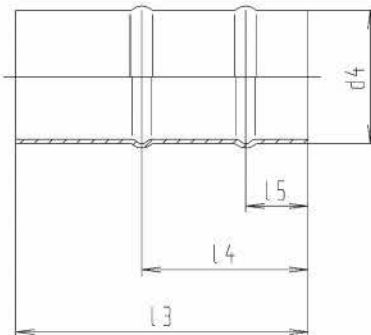
DN	d1	d4	l2	weight (kg)
15	16	19.5	63	0,040
20	20	23.5	63	0,060
25	26	29.5	75	0,110
32	32	36	85	0,140
40	38	42	95	0,170
50	50	54	106	0,250
65	66	72	117	0,580
80	81	88	127	0,660
100	100	107	140	0,940

hose nozzle, weld end, DIN - light (239)



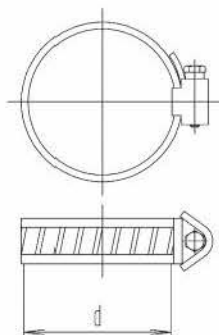
DN	d4	l3	l4	l5	weight (kg)
15	18	50	32	12	0,020
20	22	50	32	12	0,025
25	28	60	35	15	0,040
32	34	70	40	15	0,060
40	40	80	45	20	0,090
50	52	90	45	20	0,130
65	70	100	50	25	0,420
80	85	110	55	25	0,500
100	104	120	65	25	0,580

hose nozzle, weld end, inch OD - light (239Z)



DN	d4	l3	l4	l5	weight (kg)
1"	25.4	60	35	15	0,040
1¼"	31.8	70	40	15	0,060
1½"	38.1	80	45	20	0,090
2"	50.8	90	45	20	0,130
2½"	63.5	100	50	25	0,420
3"	76.1	110	55	25	0,500
4"	101.6	120	65	25	0,580

hose clip (239S)



DN	weight (kg)
12 - 20	0,020
16 - 25	0,020
20 - 32	0,020
25 - 40	0,020
32 - 50	0,030
40 - 60	0,030
50 - 70	0,030
60 - 80	0,040
70 - 90	0,040
80 - 100	0,040
90 - 110	0,040
100 - 120	0,050

t-pieces, short, DIN 11852 (for tubing acc. DIN 11850 line 2) (5111N)

DN	304 polished Ident number	316 L polished Ident number
15	● 126.06.110.0003	○ 126.06.120.0003
20	● 126.07.110.0003	○ 126.07.120.0003
25	● 126.08.110.0003	● 126.08.120.0003
32	● 126.09.110.0003	● 126.09.120.0003
40	● 126.10.110.0003	● 126.10.120.0003
50	● 126.11.110.0003	● 126.11.120.0003
65	● 126.12.110.0003	● 126.12.120.0003
80	○ 126.14.110.0003	○ 126.14.120.0003
100	○ 126.15.110.0003	○ 126.15.120.0003
matt finish on demand		

t-pieces, short, DIN 11852 (for tubing acc. DIN 11850 line 2) (5111N)

DN	304 polished Ident number	304 matt Ident number	316 L polished Ident number	316 L matt Ident number
15	○ 226.06.110.0008	○ 226.06.210.0008	○ 226.06.120.0008	○ 226.06.220.0008
20	○ 226.07.110.0008	○ 226.07.210.0008	○ 226.07.120.0008	○ 226.07.220.0008
25	○ 226.08.110.0008	○ 226.08.210.0008	○ 226.08.120.0008	○ 226.08.220.0008
32	○ 226.09.110.0008	○ 226.09.210.0008	○ 226.09.120.0008	○ 226.09.220.0008
40	○ 226.10.110.0008	○ 226.10.210.0008	○ 226.10.120.0008	○ 226.10.220.0008
50	○ 226.11.110.0008	○ 226.11.210.0008	○ 226.11.120.0008	○ 226.11.220.0008
65	○ 226.12.110.0008	○ 226.12.210.0008	○ 226.12.120.0008	○ 226.12.220.0008
80	○ 226.14.110.0008	○ 226.14.210.0008	○ 226.14.120.0008	○ 226.14.220.0008
100	○ 226.15.110.0008	○ 226.15.210.0008	○ 226.15.120.0008	○ 226.15.220.0008

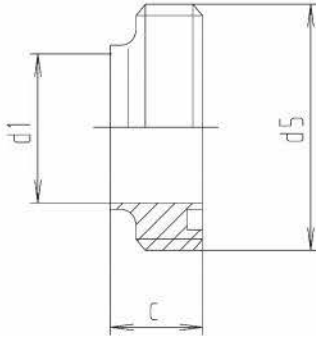
t-pieces, short, DIN 11852 (for tubing acc. DIN 11850 line 2) (5111N)

DN	304 polished Ident number	316 L polished Ident number
1"	○ 226.08.110.0009	○ 226.08.120.0009
1¼"	○ 226.09.110.0009	○ 226.09.120.0009
1½"	○ 226.10.110.0009	○ 226.10.120.0009
2"	○ 226.11.110.0009	○ 226.11.120.0009
2½"	○ 226.12.110.0009	○ 226.12.120.0009
3"	○ 226.13.110.0009	○ 226.13.120.0009
4"	○ 226.15.110.0009	○ 226.15.120.0009
matt finish on demand		

t-pieces, short, DIN 11852 (for tubing acc. DIN 11850 line 2) (5111N)

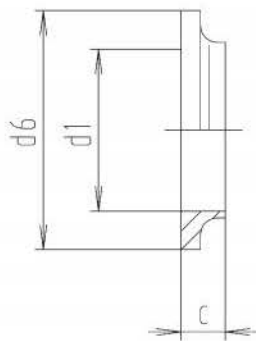
DN	304 Ident number
12 - 20	● 899.00.610.0500
16 - 25	● 899.00.610.0501
20 - 32	● 899.00.610.0502
25 - 40	● 899.00.610.0503
32 - 50	● 899.00.610.0504
40 - 60	● 899.00.610.0505
50 - 70	● 899.00.610.0506
60 - 80	● 899.00.610.0507
70 - 90	● 899.00.610.0508
80 - 100	● 899.00.610.0509
90 - 110	● 899.00.610.0510
100 - 120	● 899.00.610.0511

welding male SMS (275)



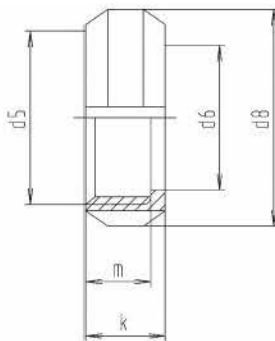
DN	c	d1	d5	weight (kg)
25	15	22.5	40x1/6"	0,050
38	20	35.5	60x1/6"	0,170
51	20	48.5	70x1/6"	0,180
63,5	24	60.5	85x1/6"	0,350
76	24	73.1	98x1/6"	0,440
101,6	30	97.6	132x1/6"	1,310

welding liner, SMS (276)



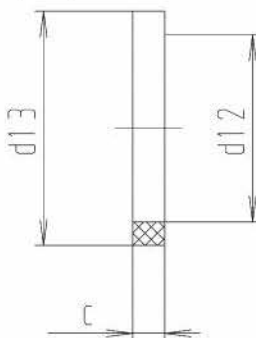
DN	c	d1	d6	weight (kg)
25	8	22.5	35.5	0,020
38	9	35.5	55	0,040
51	9	48.5	65	0,060
63,5	9	60.5	80	0,070
76	10	73.1	93	0,120
101,6	12	97.6	127	0,284

nut SMS (272)



DN	d5	d6	d8	k	m	weight (kg)
25	40x1/6"	32	51	20	16	0,110
38	60x1/6"	48	74	25	21	0,260
51	70x1/6"	60.5	84	26	21	0,310
63,5	85x1/6"	74	100	30	25	0,410
76	98x1/6"	87	114	32	26	0,570
101,6	132x1/6"	117	154	32	26	1,200

gasket SMS (273)



DN	c	d12	d13	weight (kg)
25	5.5	25	32	0,002
38	5.5	38	48	0,003
51	5.5	51	61	0,006
63,5	5.5	63.5	73.5	0,007
76	5.5	76	86	0,010
101,6	5.5	101.6	113.5	0,020

t-pieces, short, DIN 11852 (for tubing acc. DIN 11850 line 2) (5111N)

DN	304 L polished Ident number	316 L polished Ident number
25	● 121.08.110.0019	● 121.08.120.0019
38	● 121.10.110.0019	● 121.10.120.0019
51	● 121.11.110.0019	● 121.11.120.0019
63,5	● 121.12.110.0019	● 121.12.120.0019
76	● 121.13.110.0019	● 121.13.120.0019
101,6	● 121.15.110.0019	● 121.15.120.0019

t-pieces, short, DIN 11852 (for tubing acc. DIN 11850 line 2) (5111N)

DN	304 L polished Ident number	316 L polished Ident number
25	● 122.08.110.0019	● 122.08.120.0019
38	● 122.10.110.0019	● 122.10.120.0019
51	● 122.11.110.0019	● 122.11.120.0019
63,5	● 122.12.110.0019	● 122.12.120.0019
76	● 122.13.110.0019	● 122.13.120.0019
101,6	● 122.15.110.0019	● 122.15.120.0019

t-pieces, short, DIN 11852 (for tubing acc. DIN 11850 line 2) (5111N)

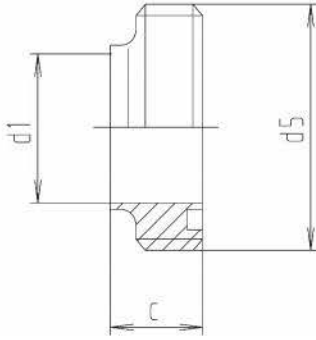
DN	304 polished Ident number	316 L polished Ident number
25	● 124.08.110.0018	○ 124.08.120.0018
38	● 124.10.110.0018	○ 124.10.120.0018
51	● 124.11.110.0018	○ 124.11.120.0018
63,5	● 124.12.110.0018	○ 124.12.120.0018
76	● 124.13.110.0018	○ 124.13.120.0018
101,6	● 124.15.110.0018	○ 124.15.120.0018

t-pieces, short, DIN 11852 (for tubing acc. DIN 11850 line 2) (5111N)

DN	EPDM Ident number	NBR Ident number	PTFE Ident number	316 L matt Ident number
25	● 825.08.6E0.0000	● 825.08.6N0.0000	○ 825.08.6T0.0000	○ 825.08.6V0.0000
38	● 825.10.6E0.0000	● 825.10.6N0.0000	○ 825.10.6T0.0000	○ 825.10.6V0.0000
51	● 825.11.6E0.0000	● 825.11.6N0.0000	○ 825.11.6T0.0000	○ 825.11.6V0.0000
63,5	● 825.12.6E0.0000	● 825.12.6N0.0000	○ 825.12.6T0.0000	○ 825.12.6V0.0000
76	● 825.13.6E0.0000	● 825.13.6N0.0000	○ 825.13.6T0.0000	○ 825.13.6V0.0000
101,6	● 825.15.6E0.0000	● 825.15.6N0.0000	○ 825.15.6T0.0000	○ 825.15.6V0.0000

welding male SMS (275)

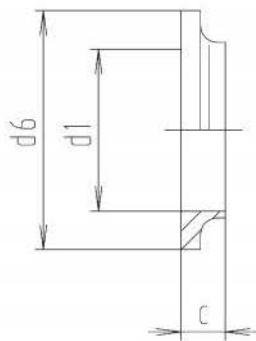
nocapius



DN	c	d1	d5	weight (kg)
25	15	22.5	40x1/6"	0,050
38	20	35.5	60x1/6"	0,170
51	20	48.5	70x1/6"	0,180
63,5	24	60.5	85x1/6"	0,350
76	24	73.1	98x1/6"	0,440
101,6	30	97.6	132x1/6"	1,310

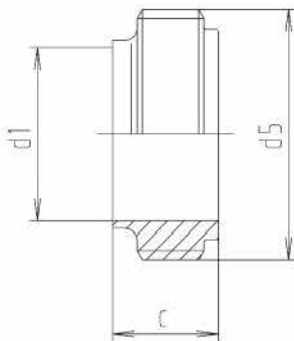
welding liner, SMS (276)

nocapius



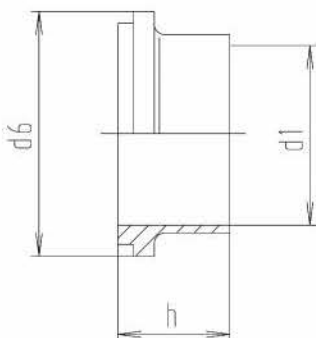
DN	c	d1	d6	weight (kg)
25	8	22.5	35.5	0,020
38	9	35.5	55	0,040
51	9	48.5	65	0,060
63,5	9	60.5	80	0,070
76	10	73.1	93	0,120
101,6	12	97.6	127	0,284

welding male IDF acc. to ISO 2853 (280A)



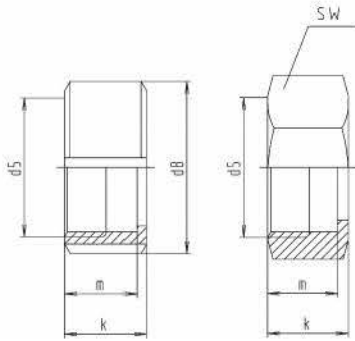
DN	c	d1	d5	weight (kg)
1"	21.5	22.2	1"	0,040
1½"	21.5	34.9	1½"	0,080
2"	21.5	47.6	2"	0,110
2½"	21.5	60.3	2½"	0,180
3"	21.5	73	3"	0,250

welding liner, IDF acc. to ISO 2853 (281A)



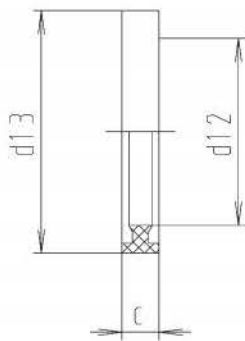
DN	d1	d6	h	weight (kg)
1"	22.2	33.8	21.5	0,030
1½"	34.9	47	21.5	0,050
2"	47.6	60.5	21.5	0,080
2½"	60.3	74	21.5	0,120
3"	73	87.5	21.5	0,180

nut IDF acc. ISO 2853 (282)



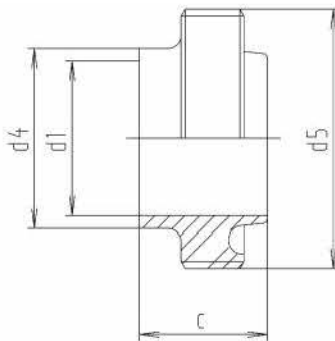
DN	d5	d8	k	m	SW	weight (kg)
1"	1"	50	30	26.5	50	0,150
1½"	1 1/2"	65	30	26.5	60	0,240
2"	2"	78	30	26.5	75	0,300
2½"	2 1/2"	95	30	26.5	90	0,380
3"	3"	108	30	26.5	105	0,510

gasket IDF acc. ISO 2853



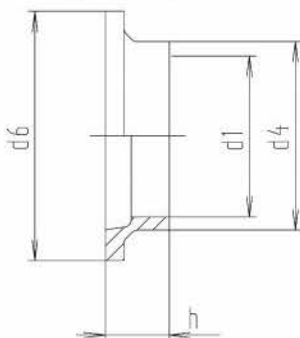
DN	c	d12	d13	weight (kg)
1"	7	25.5	32.5	0,002
1½"	7	38	46	0,004
2"	7	51	59.5	0,006
2½"	7	63	73	0,008
3"	7	75.5	86.5	0,010

welding male RJT (265)



DN	c	d1	d4	d5	weight (kg)
1"	22.2	22.2	25.6	45,5x1/8"	0,130
1½"	22.2	34.9	38.3	58,2x1/8"	0,150
2"	22.2	47.6	51	72,5x1/6"	0,210
2½"	22.2	60.3	63.7	85,2x1/6"	0,260
3"	22.2	73	76.4	97x1/6"	0,330

welding liner, RJT (266)



DN	d1	d4	d6	h	weight (kg)
1"	22.2	25.6	41.3	12.7	0,040
1½"	34.9	38.3	54	12.7	0,050
2"	47.6	51	66.7	12.7	0,060
2½"	60.3	63.7	79.6	12.7	0,080
3"	73	76.4	92.1	12.7	0,100

t-pieces, short, DIN 11852 (for tubing acc. DIN 11850 line 2) (5111N)

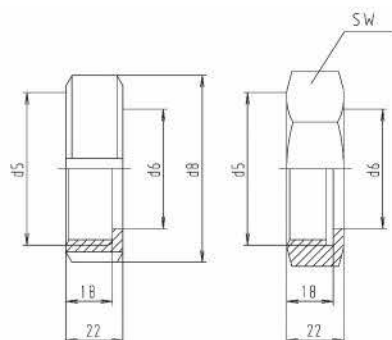
DN	304 L polished Ident number	hexagonal nut, 304 polished Ident number
1"	○ 124.08.110.0020	○ 895.08.110.0000
1½"	● 124.10.110.0020	○ 895.10.110.0000
2"	○ 124.11.110.0020	○ 895.11.110.0000
2½"	○ 124.12.110.0020	○ 895.12.110.0000
3"	● 124.13.110.0020	○ 895.13.110.0000
IDF 4825 on demand		

DN	304 L polished Ident number
1"	● 825.08.6N0.0001
1½"	● 825.10.6N0.0001
2"	● 825.11.6N0.0001
2½"	● 825.12.6N0.0001
3"	● 825.13.6N0.0001
IDF 4825 on demand	

DN	316 L polished Ident number
1"	● 121.08.120.0044
1½"	○ 121.10.120.0044
2"	○ 121.11.120.0044
2½"	○ 121.12.120.0044
3"	○ 121.13.120.0044

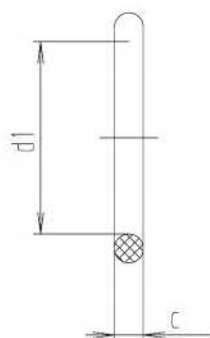
DN	316 L polished Ident number
1"	● 122.08.120.0044
1½"	● 122.10.120.0044
2"	● 122.11.120.0044
2½"	● 122.12.120.0044
3"	● 122.13.120.0044

nut RJT (267)



DN	d5	d6	d8	SW	weight (kg)
1"	46x1/8"	33.5	57	50.8	0,150
1½"	58,7x1/8"	46	72	65	0,200
2"	73x1/6"	59	86	79.4	0,280
2½"	85,7x1/6"	71.5	100	92.1	0,340
3"	98,4x1/6"	84.5	114	104.8	0,410

gasket RJT (268)



DN	c	dI	weight (kg)
1"	6.6	26.7	0,004
1½"	6.6	39.4	0,005
2"	6.6	52.1	0,008
2½"	6.6	64.8	0,010
3"	6.6	77.5	0,012

t-pieces, short, DIN 11852 (for tubing acc. DIN 11850 line 2) (5111N)

DN	304 polished Ident number	hexagonal nut, 304 polished Ident number
1"	○ 124.08.110.0021	○ 124.08.110.0031
1½"	● 124.10.110.0021	○ 124.10.110.0031
2"	● 124.11.110.0021	○ 124.11.110.0031
2½"	● 124.12.110.0021	○ 124.12.110.0031
3"	○ 124.13.110.0021	○ 124.13.110.0031

t-pieces, short, DIN 11852 (for tubing acc. DIN 11850 line 2) (5111N)

DN	NBR Ident number
1"	○ 827.08.6N0.0006
1½"	○ 827.10.6N0.0006
2"	○ 827.11.6N0.0006
2½"	○ 827.12.6N0.0006
3"	○ 827.13.6N0.0006